



## WELDSTATION

The WeldStation™ is a ductless fume extraction solution trusted by hundreds of trade schools and welding labs across North America.

Engineered for adaptability, the WeldStation is available in single or dual booth configurations, giving you the flexibility to meet your workspace needs. Its ductless design and powerful 4,000 CFM of airflow ensure seamless, heavy-duty performance without the hassle of additional accessories or fume capture arms.

Crafted with pride in the USA, the WeldStation features rugged 12-gauge, powder-coated steel construction for unmatched durability. Its self-contained, plug-and-play design streamlines installation, cutting costs and saving valuable time. Simply position the WeldStation, connect power, and you're ready to weld.

No ducts. No delays. Just a smarter, cost-effective solution built for demanding training environments.



## Product Benefits

- **No Ducting Required:** Save on expensive start-up costs and valuable space associated with the installation of ducting. The WeldStation is a self-contained system.
- **Capture Airborne Contaminants At Source:** Contains and eliminates harmful weld fumes before they can spread within your facility.
- **Flexibility:** Ducted systems are a fixed solution, making layout changes or facility expansions a costly challenge. The WeldStation offers unmatched flexibility. Its modular design allows you to adapt quickly by repositioning booths or seamlessly adding more as your needs grow. Booths can be installed side-by-side and/or back-to-back.

## Product Features

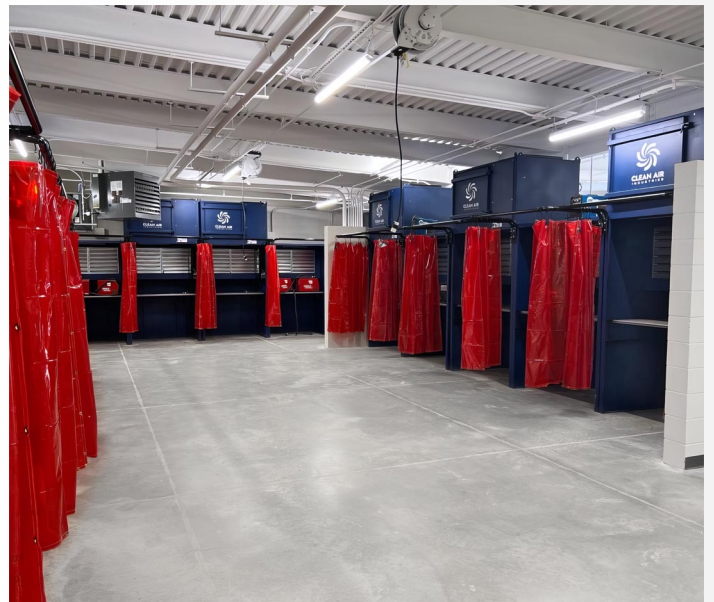
- Single and dual booth configurations available to address your needs
- Built-in tool board
- Integrated weld curtain locks in with a button pin
- Simple filter replacement featuring our new cam lock design
- Knock out holes for electrical needs
- VFD Standard for increased energy savings, noise reduction, and motor speed control
- Two 1" pulsing valves – auto or manual
- 1" NPT compressed air connection – 70-90 PSI required
- [ADA compliant](#)

## Optional Features

- Bar-grated table
- Small and large part bins
- Welder shelf
- Hooks
- Customizable logo

## Filter Information

- **Two-Stage Spark Arrestors:** Two 24" x 24" x 2" Metal Spark Baffle Filters and two 24" x 24" x 2" Metal Mesh Filters
- **Filter Cartridges:** Four Fire Retardant filters with 226 ft<sup>2</sup> of media (904 ft<sup>2</sup> total) – also available in High Efficiency Nanofiber





**ADA COMPLIANT**



## Key Applications

- Manual Welding
- Grinding
- Deburring

## Health & Safety

Exposure to weld fumes and weld smoke can pose various health risks. The specific health effects depend on the composition of the fumes, the duration and intensity of exposure, and individual susceptibility. Here are some potential health risks associated with exposure to weld fumes and weld smoke:

- Respiratory Issues
- Lung Damage
- Metal Fume Fever
- Neurological Effects

## Regulatory Compliance

Health and safety issues are being taken very seriously by a growing number of companies as OSHA, International, and industry standards increase. Many large us manufacturers are planning and adopting European exposure limits as a global standard for their entire company and are exceeding OSHA Standards.

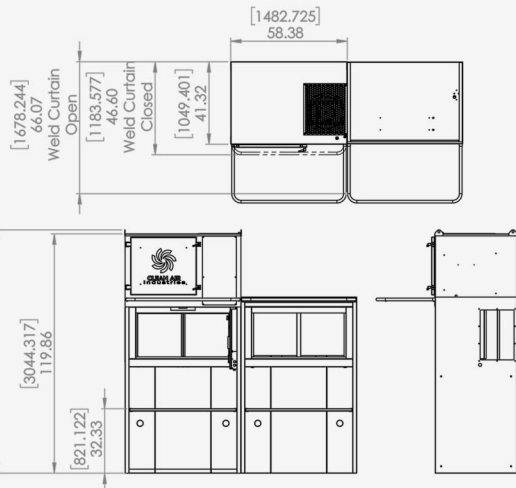
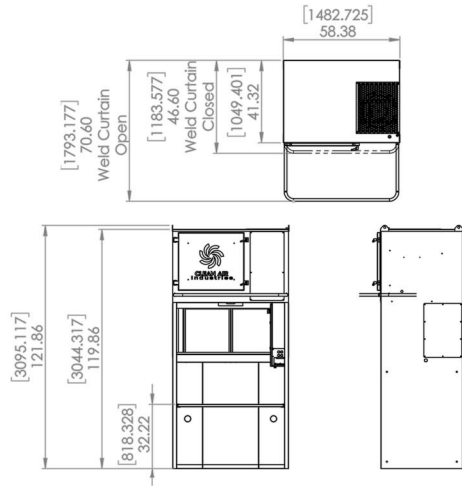
To meet these standards companies must implement a highly efficient dust and fume filtration system to filter out the harmful particulate. The exposure limits these companies are targeting range from .02 - 1 mg/m<sup>3</sup> depending on company policy, well below the 5 mg/m<sup>3</sup> standard set by OSHA.

## Warranty Information

All Clean Air Industries units are backed by a standard 10-year manufacturer's warranty\*

We guarantee that the major structural components of the goods will be free from defects in material and workmanship for ten (10) years from the date of shipment.

\*This warranty does not cover consumable parts, fuses, filters, or other non-structural components. For warranty details, visit our website: <https://clean-air.com/warranty>

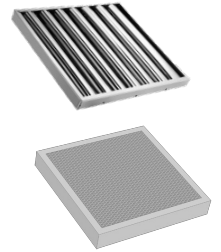


**PRE-FILTERS**

Two-Stage Spark Arrestors

**2x Metal Baffle Filter:** 24" x 24" x 2"  
(Part #: FIL-WS-BAFFLE)

**2x Metal Mesh Filter:** 24" x 24" x 2"  
(Part #: FIL-WS-METALMESH)



**MAIN FILTER CARTRIDGES**

**4x 80/20 FR – MERV 11**

(Part #: FIL-WS-1834)

- Length: 26"
- Outside Diameter: 12.75"
- Inside Diameter: 8.37"

Nanofiber upgrade available  
(Part #: FIL-WS-NANO)



**USER & MAINTENANCE MANUAL**

To learn how to properly operate and maintain this unit, scan the QR code to instantly access your user and maintenance manual.

Contact us for replacement filters and parts, or service.



MODEL	CFM	MOTOR	VOLTAGE	MAX NOISE	DIMENSIONS	WEIGHT
WeldStation Single 5'	4000	5HP@3400 RPM	208, 240, 460v/3/60Hz	74 dBA	59" W x 122" H x 71" D	1600 lbs.
WeldStation Single 6'	4000	5HP@3400 RPM	208, 240, 460v/3/60Hz	74 dBA	71" W x 122" H x 71" D	1650 lbs.
WeldStation Dual 5x5	4000	5HP@3400 RPM	208, 240, 460v/3/60Hz	74 dBA	118" W x 122" H x 71" D	2100 lbs.
WeldStation Dual 6x5	4000	5HP@3400 RPM	208, 240, 460v/3/60Hz	74 dBA	142" W x 122" H x 71" D	2200 lbs.

\* Please note that the dimensions provided are based on our base models and may vary depending on selected features. To ensure accurate shipping quotes, kindly contact us for personalized information that considers your chosen product features and customizations. Feel free to reach out with any questions or to request a personalized shipping quote. We are committed to your satisfaction and look forward to helping you!