



OVER 40 YEARS

HOTRONIX®

BUILT FOR BUSINESS. BIG OR SMALL.



Distributed by



Learning Labs, Inc.

1-800-334-4943

www.LLI.com

THERE REALLY IS A DIFFERENCE

Not all heat presses are created equal. Our heat presses deliver the ultimate in heat printing technology, trusted by decorators of all sizes around the world. Grow your business with print-perfect results every time.

PATENTED TECHNOLOGY: Get the true Hotronix® experience and don't settle for imitations.

PRECISION GUARANTEED: Every press is engineered for flawless results, every single time.

UNRIVALED QUALITY: Durable, high-performance equipment built to last.

SAFETY YOU CAN TRUST: Every Hotronix® press meets UL standards through SGS testing and complies with CE and RoHS requirements. Work with peace of mind knowing your heat press meets the highest international safety standards.

WORLD'S BEST WARRANTY: Unmatched commitment to quality with the best warranty in the heat press industry.

CHOOSE HOTRONIX®.

STAHL'S
Hotronix®



INDUSTRY
INNOVATORS



BLUE RIBBON
CUSTOMER SERVICE





TECHNOLOGY
DRIVEN



USA-MADE
DISTRIBUTED WORLDWIDE



Heat Press Equipment and Accessories 4

The MAXX®250 Clam	4
The MAXX® 250 Cap	5
Smart IQ® Technology	7
ProPlace IQ™	8-9
360 IQ® Hat Press	10
Quick Snap Hat Press Platen Cover	10
Fusion IQ®	11
Auto Open Clam 16" x 20"	11
Dual Air Fusion IQ®	12
Air Fusion IQ®	12
Auto Open Clam	13
Auto Open Cap	13
LowRider	14
Craft Heat Press	14

Heat Press Accessories 15

ProPlace IQ™ Retro Mount	15
Foam Cover Pads	15
Tag Along™ HP Platen	16
GK Tag Along™ HP Platen	16
Power Platen™	16
Heat Press Caddie™ Stand	17
Heat Printing Equipment Cart	17
EZ Weeding™ Table	17
Heat Press Laser Alignment System	17

Platens 18-19

The Right Platen for Your Heat Press	18
Quick Change Platens	19
Interchangeable Cap Platens	19
Platen Covers	19

Stampinator® 480 20-21

Certifications & Patents 22

Warranty & Support 23

NEW

THE MAXX[®] 250 HEAT PRESSES

MADE IN THE USA. BUILT TO LAST. PROVEN TO PERFORM.

THE MAXX[®] 250 CLAM

NEW SPECIAL EDITION MODELS

The best-selling MAXX[®] heat press is now available in a limited edition for 2026, featuring an all-new lower price in honor of America's 250th anniversary. These budget-friendly, American-made machines consistently outperform others in their class, delivering reliable results press after press. Perfect for new decorators, part-time production, or as a dependable backup, the MAXX[®] series is built to power your print-on-demand workflow.

16" x 20"

120 volt • 15 amps / 1800 watts
240 volt • 7.5 amps / 1800 watts

Shipping: 104 lbs. • 36"L x 25"W x 21"H



15" x 15"

120 volt • 15 amps / 1800 watts
240 volt • 7.5 amps / 1800 watts

Shipping: 78 lbs. • 36"L x 25"W x 21"H





11" x 15"

120 volt • 8.3 amps / 1000 watts

240 volt • 4.5 amps / 1000 watts

Shipping: 72 lbs. • 36"L x 25"W x 21"H



THE MAXX® 250 CAP

This manually operated clamshell design is economical and easy to operate. The MAXX® 250 Cap offers a digital time and temperature display, and a cap hold-down device keeps caps securely in place during heat printing.

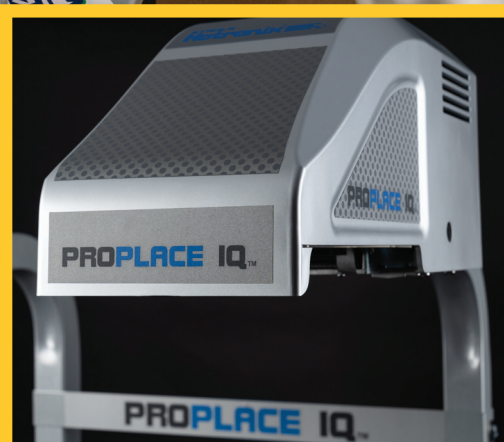
The MAXX® 250 Cap

120 volt • 4 amps / 500 watts

240 volt • 2 amps / 500 watts

Shipping: 41 lbs. • 26"L x 15"W x 21"H





START SMART STAY AHEAD CUTTING-EDGE HOTRONIX® IQ® TECHNOLOGY



The Hotronix® IQ® Advantage So Advanced, It's Simple

Hotronix® IQ® heat presses combine precision engineering with advanced print management technology no one else has. Whether you're on-site or on-the-go, our presses empower you to deliver quality apparel efficiently and reliably.

PRECISION AT THE MACHINE

- **Preloaded Material Presets:** Simplify production with preloaded settings for your most-used materials, ensuring accurate time, temperature, and pressure for every job.
- **Digital Pressure Readout:** Say goodbye to guesswork with precise pressure readings that guarantee consistent, high-quality results.
- **Auto On/Off Scheduling:** Save time and energy with programmable start and stop times tailored to your workday.
- **Operator Performance Tracking:** Monitor daily production from each operator to ensure jobs are completed efficiently and accurately.

CONTROL IN THE CLOUD

- **Remote Business Management:** Stay connected to your operation from anywhere with real-time insights on production performance.
- **Data-Driven Insights:** Track active vs. idle time, job completion rates, and operator performance to make informed decisions that boost productivity.
- **Comprehensive Job Tracking:** Know exactly how many preheats and heat applications have been completed to maintain accountability and accuracy.
- **Quality Assurance:** Identify deviations from presets to prevent errors, ensuring the durability and quality of every product.

With Hotronix® IQ® heat presses, you'll have the tools to manage your business seamlessly while delivering exceptional results to your customers. Control, efficiency, and quality are now at your fingertips.



AWARD WINNING

PERFECT PLACEMENT EVERY TIME

The Hotronix® **PROPLACE IQ™**

The innovative Hotronix® ProPlace IQ™ system integrates with the Dual Air Fusion IQ® to maximize heat printing efficiency. Designs are projected directly onto blanks to promote quick and easy alignment, eliminate errors, save time, and reduce waste.

- ▶ Intuitive design projection via IQ® Portal
- ▶ Takes the guesswork out of alignment
- ▶ Ideal for large jobs & faster production
- ▶ Available for the Dual Air Fusion IQ®

The Hotronix® ProPlace IQ™ is available as an individual unit to retro fit to your existing Dual Air Fusion IQ® heat press or as a fully integrated system with the purchase of a new Dual Air Fusion IQ®.



HOTRONIX® PROPLACE IQ™ FULLY INTEGRATED

The Hotronix® Dual Air Fusion ProPlace IQ™ fully integrated system is available in 120V or 240V and connects wirelessly to the heat press via the IQ® Portal.

- ▶ Wireless Communication via IQ® Portal
- ▶ Navigation, Adjustment, & Storage of Projection Images
- ▶ Connectivity to External Systems
- ▶ Supported Power within Machine



HOTRONIX® PROPLACE IQ™ RETROFIT

Take your trusted Hotronix® Dual Air Fusion IQ® to the next level with the ProPlace IQ™ Retrofit system — a must-have upgrade for unmatched performance and precision!

- ▶ HDMI or USB Connection to IQ® Portal
- ▶ Navigation, Adjustment, & Storage of Projection Images within IQ® Portal
- ▶ Connectivity to External Systems
- ▶ Requires Separate Power Source

SIMPLIFY PRINTING, SPEED UP PRODUCTION

Visit hotronix.com/request-dealer to order yours today

HOTRONIX® HEAT PRESSES

BEST SELLER

360 IQ® HAT PRESS

HIGH PROFIT, HIGH IMPACT HATS. ONE MACHINE.

Successfully print on all sides of a hat without removing it from the press. The one-size-fits-all molded platen eliminates crease lines, and a heated lower platen makes it the perfect solution for applying emblems, appliqué, and patches. Best of all, it comes equipped with advanced IQ® technology allowing you to track your business in real time.

360 IQ® Hat Press

120 volt • 10 amps / 800 watts

240 volt • 5 amps / 800 watts

Shipping: 50 lbs. • 25"L x 14"W x 25"H

NEW

QUICK SNAP HAT PRESS PLATEN COVER

PRINT ANY STYLE CAP IN A SNAP

The Quick Snap transforms the Hotronix® 360 IQ® into an even faster, more versatile machine. This interchangeable cover easily snaps into place, creating a wider heat surface ideal for dimensional graphics, patches, and emblems. Engineered for LIQUID 3D™ and better application across any hat style.

Quick Snap Hat Press Platen Cover

Shipping: 1 lbs. • 8"L x 8"W x 6"H



BEST SELLER

FUSION IQ®

#1-SELLING HEAT PRESS WORLDWIDE

In the decorating business, it's all about customization, and that's what we had in mind when we engineered the Fusion IQ®. Switch between the draw and swing motions depending on workspace, user preference, or garment. Touch screen technology allows you to program an unlimited number of presets. Add the compatibility of optional Quick Change Platens, and you'll be decorating more than ever.

Fusion IQ® 16" x 20"

120 volt • 15 amps / 1800 watts

240 volt • 7.5 amps / 1800 watts

Shipping: 150 lbs. • 37"L x 25"W x 24"H



BEST SELLER

AUTO OPEN CLAM - 16" X 20"

MOST POPULAR USER-FRIENDLY HEAT PRESS

This best-selling full-size clam's large surface accommodates the application of names and numbers on jerseys, all-over sublimation prints, and oversized transfers. Compatible with nearly every optional Quick Change Platen, it's the most versatile heat press available.

Also available in a hover model.

Order the Auto Open Clam as a Hover Press™, which is designed for curing inks during the DTG decorating process. Switch from Hover to Auto Open mode as needed.

16" x 20"

120 volt • 15 amps / 1800 watts

240 volt • 7.5 amps / 1800 watts

Shipping: 100 lbs. • 36"L x 25"W x 21"H



Hover Press™

120 volt • 15 amps / 1800 watts

240 volt • 7.5 amps / 1800 watts

Shipping: 100 lbs. • 36"L x 25"W x 21"H

DUAL AIR FUSION IQ®

PRODUCTIVITY OPTIMIZED

Built for ultimate heat printing efficiency, the Dual Air Fusion IQ® provides the functionality of two presses with dual 16" x 20" workstations. Program the press to preheat on station A and complete final application on station B, automatically adjusting time and pressure as it shuttles between workstations. It's a smooth, quiet, and effortless operation controlled by the push of a button and tap of the foot pedal. Simply power on and choose between dual or independent operation.

Dual Air Fusion IQ® (2) 16" x 20" Platens

120 volt • 15 amps / 1800 watts

240 volt • 15 amps / 3500 watts

Shipping: 410 lbs. • 45"L x 45"W x 30"H

Requires air compressor (not included) with minimum 1 horsepower and 8 gallon hold tank. Uses 3.8 CFM.



AIR FUSION IQ®

AIR POWERED FOR EFFORTLESS OPERATION

The Air Fusion IQ® offers a two-button operation which locks the upper platen down, applying accurate, even pressure, then automatically swings open to create a heat-free workspace. Patented Auto Adjust Pressure™ automatically adjusts to the thickness of the item you're printing. Program your time to change from preheating to final application. With up to four time and pressure settings, it's not just possible — it's automatic.

Air Fusion IQ® 16" x 20"

120 volt • 15 amps / 1800 watts

240 volt • 7.5 amps / 1800 watts

Shipping: 245 lbs. • 40"L x 48"W x 58"H

Requires air compressor (not included) with minimum 1/2 horsepower and 2.5-gallon hold tank. Uses 2.3 CFM.



TABLE TOP AIR FUSION IQ®

SPACE-SAVING TABLETOP DESIGN

Take everything you love about our Fusion IQ®, add the power of an air compressor, the compact size of a tabletop heat press, and you have the Table Top Air Fusion IQ®. With an upper platen that operates with the touch of a button, operator fatigue is a thing of the past.

Table Top Air Fusion IQ® 16" x 20"

120 volt • 15 amps / 1800 watts

240 volt • 7.5 amps / 1800 watts

Shipping: 180 lbs. • 37"L x 24"W x 24"H

Requires air compressor (not included) with minimum 1/2 horsepower and 2.5-gallon hold tank. Uses 2.3 CFM.



AUTO OPEN CLAM - 11" X 15"

The 11" x 15" Auto Open Clam is perfect for shops with limited space. This lightweight, compact design is also a great choice for heat printing at off-site events.

11" x 15"

120 volt • 8.3 amps / 1000 watts

240 volt • 4.5 amps / 1000 watts

Shipping: 72 lbs. • 36"L x 25"W x 21"H



AUTO OPEN CLAM - 16" X 16"

The 16" x 16" Auto Open Clam is a popular choice and favored by many shops that print full-size transfers.

16" x 16"

120 volt • 15 amps / 1800 watts

240 volt • 7.5 amps / 1800 watts

Shipping: 90 lbs. • 36"L x 25"W x 21"H



AUTO OPEN CAP

Decorate with ease and precision, thanks to the reliability and accuracy of our Auto Open Cap Press. A hold-down device pulls the front of the cap taut, securing it while providing a smooth surface for heat application. Decorate a variety of cap styles with four optional Quick Change Platens.

Auto Open Cap

120 volt • 4 amps / 500 watts

240 volt • 2 amps / 500 watts

Shipping: 41 lbs. • 26"L x 15"W x 21"H



HOTRONIX® PRESSES ARE PROUDLY MADE IN THE U.S.A.

LOWRIDER

The lightweight, compact design makes this clamshell press the perfect choice for mobile heat printing opportunities. Even, edge-to-edge heat and pressure gives you the confidence to heat print on small areas.

LowRider 6" x 6"

120 volt • 3 amps / 360 watts

240 volt • 1.5 amps / 500 watts

Shipping: 41 lbs. • 26"L x 15"W x 21"H



CRAFT HEAT PRESS

This affordable and compact Craft Heat Press is the perfect solution for home crafting and hobby spaces. It is lightweight, durable, and features easy-to-use technology to help you get started in a workspace of any size.

The Craft Press

120 volt • 7 amps / 800 watts

Shipping: 37 lbs. • 12 3/4"L x 17 1/4"W x 12 1/2"H



ENGINEERED FOR SAFETY. TESTED FOR TRUST.

All Hotronix® heat presses are rigorously tested and verified by third-party experts to meet industry safety standards. Certified by SGS to UL standards and CE/RoHS approved, each machine is built to deliver dependable performance, long-term reliability, and peace of mind for your business.

HEAT PRESS ACCESSORIES

HOTRONIX® PROPLACE IQ™ RETRO MOUNT

PERFORMANCE

Upgrade today and watch your trusted Hotronix® Dual Air Fusion IQ® (2015 or later) perform better than ever – faster setups, flawless alignment, and unbeatable results.

SPECS

Comes with power adapter for 120/240 volt

Shipping: 33 lbs. • 24"L x 30"W x 14"H



FOAM COVER PADS

The 4" x 8" pad helps when heat applying dimensional emblems and patches with a heat press. Available in three thicknesses: the thicker the emblem, the thicker the pad you use.

1/8" thick 16" x 20"

1/4" thick 4" x 8"

1/8" thick 4" x 8"



HOTRONIX® TAG ALONG™ HP PLATEN

DOUBLE THE PRINTING CAPABILITIES

The Tag Along™ HP Platen gives you the power to quickly apply tagless labels and full shirt fronts at the same time. The full front print area allows you to apply many different size transfers, and its innovative design helps you load shirts straight for accurate placement, every time.



Features:

- Must be used with a threadable heat press
- 16" x 15" full front print area
- 3.25" x 3.25" tag print area

TAG ALONG™ HP PLATEN (Quick Slip Pad Protector included)

Shipping: 23 lbs. • 26"L x 20"W x 5"H

Compatible with 16" x 20" MAXX® Clam and Hotronix® 16" x 20" Auto Clam, Hover Press™, Fusion IQ®, Table Top Air Fusion IQ®, Air Fusion IQ®, and Dual Air Fusion IQ®.

GK TAG ALONG™ HP PLATEN (Quick Slip Pad Protector included)

Shipping: 23 lbs. • 26"L x 20"W x 5"H

Compatible with 16" x 20" Geo Knight Heat Presses that were manufactured after 2015.

HOTRONIX® POWER PLATEN™

FOR UPPER AND LOWER HEAT

The Power Platen™ applies heat directly beneath the transfer for a quicker bond between adhesive and fabric, applying less heat to the face of heat-sensitive garments. Compatible with 16" x 20" Hotronix® Auto Clam, MAXX® Clam, and Air Fusion IQ® heat presses*, the Power Platen™ is available in three interchangeable sizes, each with a built-in pillow for the right fit, no matter what you're decorating.



Controller

120 volt • 6.3 amps / 750 watts
240 volt • 3.2 amps / 750 watts
Shipping: 5 lbs. • 10"L x 8½"W x 8¾"H

16" x 20"

120 volt • 6.3 amps / 750 watts
240 volt • 3.2 amps / 750 watts
Shipping: 26 lbs. • 16"L x 20½"W x 4¾"H

11" x 15"

120 volt • 3.3 amps / 390 watts
240 volt • 1.6 amps / 390 watts
Shipping: 13 lbs. • 11½"L x 15½"W x 4¾"H

6" x 6"

120 volt • 0.7 amps / 88 watts
240 volt • 0.4 amps / 88 watts
Shipping: 6 lbs. • 6½"L x 6½"W x 4¾"H

Requires a dedicated 20-amp circuit / 2-year warranty on controller / 1-year warranty on all other parts

**Not compatible with Hotronix® Fusion IQ® or draw presses.
One or more patent and/or patents pending.*

HOTRONIX® HEAT PRESS ACCESSORIES ARE PROUDLY MADE IN THE U.S.A.

HEAT PRESS CADDIE™ STAND

The Heat Press Caddie™ Stand is an adjustable pedestal stand that converts any Hotronix® Auto Open or MAXX® Clam into a threadable heat press. Self-leveling casters provide portability and stability, allowing you to take advantage of mobile heat printing opportunities.



Also available in a countertop version.

EZ WEEDING™ TABLE

The bond between a heat transfer material and its carrier lessens when heated. This patented table heats materials slightly to promote removal from the carrier, resulting in easier weeding with less material breakage.

- 20" x 36" weeding area — a full yard of weeding production
- Three temperature settings — 110°F for fine-detailed designs, up to 130°F for maximum productivity on larger jobs
- Top clamp holds materials in place while weeding
- Built-in storage compartment
- Fits most production tables and countertops

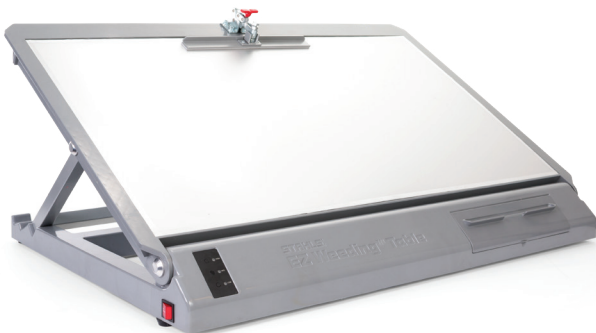
Actual Weight: 27 lbs.

Shipping Weight: 28 lbs.

Dimensions: 39"L x 27.5"W x 4"H (Closed)

Dimensions: 39"L x 27.5"W x 17"H (Open)

Shipping Dimensions: 31"L x 43"W x 8"H



HEAT PRINTING EQUIPMENT CART

Add more counter space to your shop with this heavy-duty steel cart. Designed to hold the Dual Air Fusion IQ®, it can also be used with other heat presses, small vinyl cutters, printers, and more. Pivoting wheels allow for easy movement around shops or at events, and lock to ensure stability.

- Powder-coated, scratch-resistant, heavy-duty steel
- Holds up to 600 lbs.
- Adjustable height, from 17" to 35"
- Lockable, pivoting wheels

Actual Weight: 122 lbs.

Shipping Weight: 126 lbs.

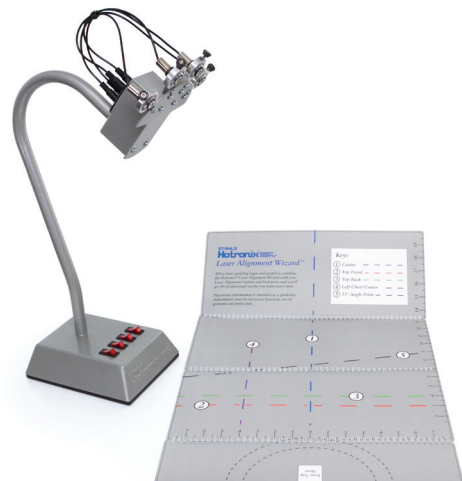
Dimensions: 37.6"L x 24"W x 17.3"H

Shipping Dimensions: 38.2"L x 24.8"W x 18.11"H



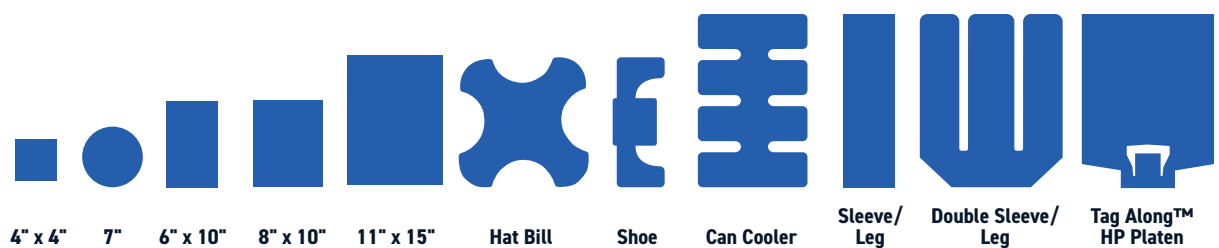
HEAT PRESS LASER ALIGNMENT SYSTEM

For fast, accurate, and precise placement, choose the Hotronix® Heat Press Laser Alignment System. This tabletop unit features four adjustable lasers and is compatible with any brand of heat press. Included is the Laser Alignment Wizard™, a heavy-duty, spiral-bound template with five popular layouts. Simply align each bulb to the guides for accurate positioning.



THE RIGHT PLATEN

FOR YOUR HEAT PRESS



	4" x 4"	7"	6" x 10"	8" x 10"	11" x 15"	Hat Bill	Shoe	Can Cooler	Sleeve/ Leg	Double Sleeve/ Leg	Tag Along™ HP Platen
DUAL AIR FUSION IQ®	•	•	•	•	•	•	•	•	•	•	•
AIR FUSION IQ®	•	•	•	•	•	•	•	•	•	•	•
FUSION IQ®	•	•	•	•	•	•	•	•	•	•	•
HOVER PRESS™ (16" x 20")	•	•	•	•	•	•	•	•		•	•
AUTO OPEN CLAM (16" x 20")	•	•	•	•	•	•	•	•		•	•
AUTO OPEN CLAM (16" x 16")	•	•	•	•	•	•	•				
AUTO OPEN CLAM (11" x 15")	•	•	•	•	•		•				
THE MAXX® CLAM (16" x 20")	•	•	•	•	•	•	•	•		•	•
THE MAXX® CLAM (15" x 15")	•	•	•	•	•	•	•				
THE MAXX® CLAM (11" x 15")	•	•	•	•	•		•				

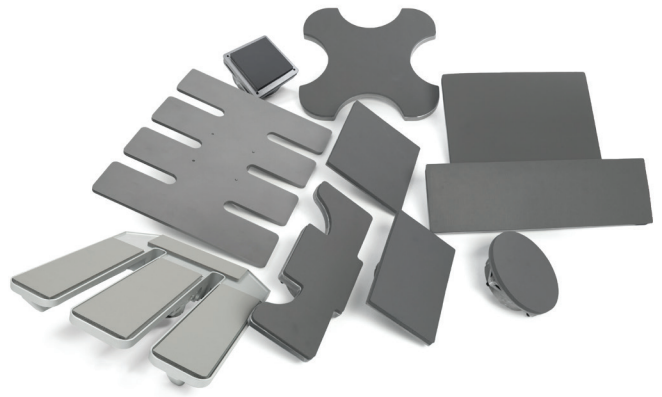
Compatible with heat presses manufactured after 2014.

HOTRONIX® HEAT PRESS ACCESSORIES ARE PROUDLY MADE IN THE U.S.A.

QUICK CHANGE PLATENS

Use interchangeable platens to decorate a wide variety of apparel and accessories. Platens are compatible with Hotronix® and MAXX® brand presses.

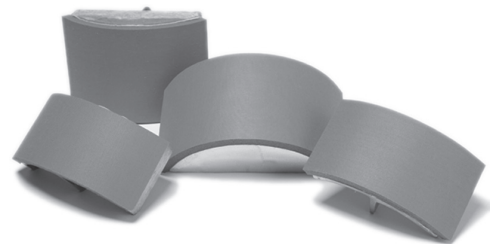
Tag Along™ HP Platen — double the printing capabilities
4" x 4" — for small garments and accessories
7" Round — for duffel bags
8" x 10" — for tote bags
6" x 10" — for left chest and hoodie pockets
Best Value — Set of 3 (7" Round, 8" x 10", 6" x 10")
MVP 11" x 15" — for women and children's apparel
Shoe 6" x 15" — for athletic footwear
FUSION® Sleeve/Leg 6" x 20" — for long, slender items
Double Sleeve/Leg 16" x 20" — for long, slender items
Can Cooler — for 8 collapsible can coolers
Hat Bill — underside or top



INTERCHANGEABLE CAP PLATENS

Interchangeable cap platens make decorating hats easy. Whether you have a low-profile or oversized hat, we have a platen that fits. For heat press machines purchased prior to 2012, visit stahls.com.

All Star 2½" x 6½" — for low-profile caps
Rookie 3" x 5½" — for low-crown caps
Slugger 4" x 6½" — for full-crown ball caps
Champ 4" x 8" — for oversized caps
Best Value — Set of 4 (1 each)



PLATEN COVERS

Quick Slip Lower Platen Protector - This fitted cover slips snugly over the bottom platen, making it easy to slide the garments on the platen. It also reduces wear and tear on the lower platen.

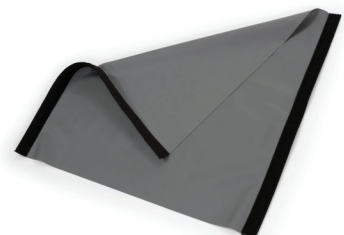
6" x 10"
8" x 10"
11" x 15"
15" x 15"
16" x 16"
16" x 20"

Upper Platen Cover - This fitted cover slips snugly over the upper platen, protecting it from inks, adhesives, and other residue during the heat printing process.

16" x 20"

Silicone Upper Platen Cover - Greatly reduces heat press imprint on performance wear and other heat-sensitive fabrics such as neoprene and Lycra®/spandex.

16" x 20"



New

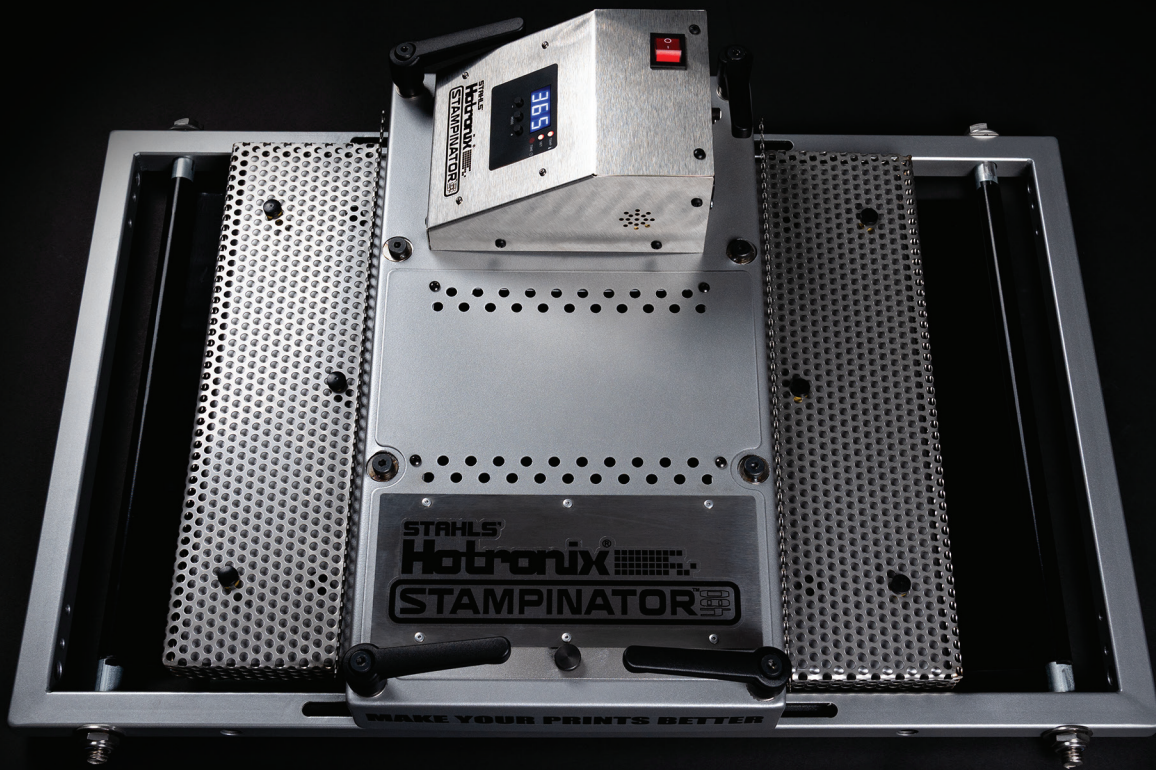
TRANSFORM YOUR SCREEN PRINTING PRESS

The Hotronix®

STAMPINATOR®

Elevate your print quality with the **Stampinator® 480** by flattening fibers and flash curing in one seamless step. Built with Hotronix precision, its integrated compression system smooths the print surface before ink hits the garment, producing sharper detail, cleaner finishes, and consistent results on every run.





WHAT IT DOES

- ▶ Flash cures plastisol or water-based inks in line
- ▶ Compresses fibers for a smoother, more uniform underbase
- ▶ Improves registration, ink clarity, and print consistency
- ▶ Installs easily—no press modification required
- ▶ Adds flexibility for heat transfers, vinyl, and specialty finishes

UNIVERSAL COMPATIBILITY

Works with most major automatic screen printing presses, including

- | | |
|-------------|-------|
| ▶ ROQ | ▶ M&R |
| ▶ Workhorse | ▶ Tas |
| ▶ Anatol | ▶ MHM |

Available in 120 volt and 240 volt

BEFORE Stampinator® 480



AFTER Stampinator® 480



LEARN MORE: [HOTRONIX.COM/STAMPINATOR](https://www.hotronix.com/stampinator)

SETTING THE STANDARD FOR SAFETY

At Hotronix®, your safety is our priority. Whether you're running a business or creating at home, you can rely on our heat presses for reliability and peace of mind. Every press model meets UL standards, ensuring top-tier performance and confidence. When you choose Hotronix®, you choose equipment that sets the bar in the industry.

WHY IS CERTIFICATION IMPORTANT FOR YOU?

SAFETY FOR EVERYONE

Protect your family, employees, and customers with equipment built to meet stringent safety protocols. Equipment evaluated to recognized safety standards can help support insurance requirements and reduce the risk of complications or denied claims.

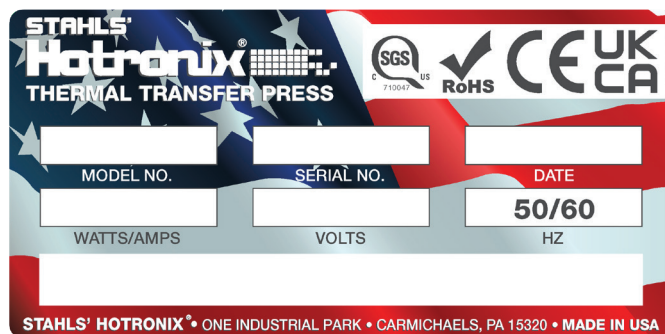
TRUST AND PROFESSIONALISM

Show your customers and community that you care about safety and quality—a commitment that builds trust and enhances your reputation.

Hotronix® heat presses are designed with a global perspective and evaluated to meet internationally recognized safety standards. In the U.S., machines are certified by SGS to UL safety standards, and in the European Economic Area (EEA), they meet CE conformity requirements. While CE confirms compliance with EU regulations, adherence to UL safety standards reflects rigorous testing for electrical and operational safety. Together, these standards help ensure dependable equipment that supports your business wherever it operates.

THERE'S ONLY ONE HOTRONIX®

Beware of imitators and knockoff heat presses trying to replicate the only heat press brand that's trusted industry wide. Only authentic, American-made Hotronix® machines carry the proper certifications to ensure consistent, high-quality results. Look for the "Made in America" serial tag, official certifications, and Hotronix® branding to confirm you have the real thing.



Don't be duped by inferior equipment. STAHL'S® is committed to protecting our innovations and actively pursues legal action against companies violating our patents. Choose Hotronix®—the name trusted worldwide for perfect transfer applications, every time.

BLUE RIBBON SUPPORT

SOLUTIONS YOU NEED, WHEN YOU NEED THEM

CONTACT US

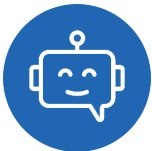
There are more ways than ever to interact with Hotronix®.



SUBMIT SUPPORT REQUEST

For heat presses manufactured in 2007 or later, simply fill out a ticket with your machine's serial and model number and a member of our Tech Team will reach out to you.

hotronix.com/support



GET HELP FROM H.E.R.B.

For 24/7 support regarding spare parts or common challenges about your Hotronix® heat press, our Hotronix Equipment Resource Bot is here to help.

hotronix.com



TECH SUPPORT & REPAIR VIDEOS

Our team of experts have created an extensive library of videos to help you get started, troubleshoot any challenges you're facing, and be your own at-home service tech.

hotronix.com/videos



EMAIL

For non-technical matters, order information, or general inquiries, send an email with your contact information to our Customer Service department, and a team member will be in touch.

customerservice@hotronix.com

STAHL'S HOTRONIX® PREMIER WARRANTY

Lifetime on heating element

5-year on framework

2-year on circuit board

1-year parts

Free lifetime technical support (non-transferable)

STAHL'S HOTRONIX® MAXX® WARRANTY

Lifetime on heating element

1-year parts

Free lifetime technical support (non-transferable)



STAHL'S
Hotronix®

HOTRONIX.COM | 800.727.8520



CONTACT US

Distributed by



Learning Labs, Inc.

1-800-334-4943

www.LLI.com

**Machines are In Stock
& Ready to Ship**



Proudly Made in the USA

Hotronix® is a registered trademark
of Stahls' Inc. with numerous
patents/patents pending.
©Stahls' Inc. 2025