

Breathe Life into Your Program

Health Occupations Products
by
 Learning Labs, Inc.

Table of Contents

Advanced Patient Care Package

Stretcher

Wheelchair

Gerichair

Oxygen Tank

Long Spine Board

Wound Simulation Kit

Medical Laboratory Equipment Package

Centrifuge

Microwave Oven

Microscope

Advanced Instrument Package

AED

EKG Machine & Supplies

Glucose and Cholesterol Monitor

Pulse Oxymeter

Models & Mannequin Package

Adult Mannequin

[Choking Charlie](#)

[Colostomy & Ileostomy](#)

[CPR Infant](#)

[CPR Child](#)

[CPR Adult](#)

[CPR Adult/Child 5-Pack](#)

[Basic Buddy Fast Pack](#)

[Human Torso](#)

[Infant Mannequin \(Male and Female\)](#)

[Skeleton](#)

[Exam Room Equipment](#)

[Exam Table](#)

[Scale – Adult](#)

[Scale – Infant](#)

[Privacy Screens/Curtains](#)

[Patient Room Equipment](#)

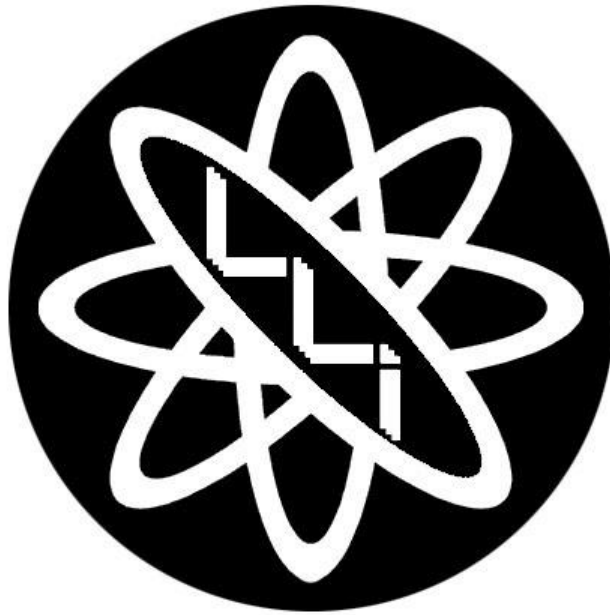
[Hospital Bed Package](#)

[Headwall System](#)

[Isolation Cart](#)

[Equipment List](#) – Choose What You Need (including non-capital items)

Advanced Patient Care Package*



www.LLI.com

sales.dept@lli.com

1-800-334-4943

*models and specs subject to change

Stretcher

- Height Overall / High Position: 35" (88.9 cm)
- Height Overall / Low Position: 21½" (54.6 cm)
- Overall Length: 83" (210.8 cm)
- Overall Width / Siderails up: 32" (81.3 cm)
- Upper Frame Width / Siderails Stored: 26½" (67.3 cm)
- Overall Siderail Length: 47" (119.4 cm)
- Siderail Height Above Sleep Surface: 14" (35.6 cm)
- Mattress Size: 26" x 75" (66 cm x 190.5 cm)
- Caster Size: 8" (20.3 cm)
- Floor-to-Base Clearance: 3½" (8.9 cm)
- Floor-to-Hydraulic Cylinder Clearance: 2" (5 cm)
- Base Shroud Width: 28" (71.1 cm)
- Maximum Back Incline: 90°
- Maximum Thigh Section Incline: 25°
- Weight / Stretcher with Casters: 225 – 260 lb. (102 – 118 kg)
- Maximum Patient Weight: 500 lb. (226.8 kg)
- Standard Features: Back Section Inclination / Thigh Section Inclination / Foot Section Inclination / IV Pole Accommodation
- Optional Features: NEW STRETCHER PAD SOLD SEPARATELY



Silver Sport 1 Wheelchair

HCPCS: K0001-1,K0001

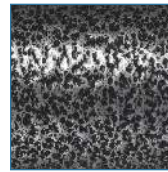


FIGURE A



FIGURE B



FIGURE C



FIGURE D



FIGURE E



FIGURE F

- Powder coated silver vein steel frame (Figure A)
- Padded armrests
- Nylon upholstery is durable, lightweight, attractive and easy-to-clean
- Urethane tires mounted on composite wheels provide durability and low maintenance
- Comes with push-to-lock wheel locks
- Carry pocket on backrest provides additional convenience
- Comes with swing-away footrests
- Folding back-canes for transport and storage
- Weight Capacity: 250 lbs

PRODUCTS	Description
SSP118FA-SF	Silver Sport 1 Wheelchair, CS

SPECIFICATIONS	Description
Back Height	16"
Carton Shipping Weight	42.8 lbs.
Overall Height	30" 36"
Overall Width	24" 11"
Seat Dimensions	18" (W) x 15.75" (D)
Seat To Floor Height	19.5"
Seat Width	18"
Warranty	Limited 3 Year
Weight	37.6 lbs.
Weight Capacity	250 lbs

ACCESSORIES	Description
STDS831	Heel Loops, 1pr/bx, BX
STDS1040S	Cup Holder, Swivel,1BX,6/CS, BX
STDS833N	Rear Anti Tipper w.wheels SSP&CS,1/pr, PR
STDS6008-1	Carry Bag,W/C,Oxygen,1/ea, EA
LK3JELR	ELR Set,Black,1Pair eq EA, PR
STDS818	Anti-Tippers,rear, SentraRecliner,1pr/bx, BX
STDS850	Seat Belt, Clasp Type,1/ea, EA
STDS851	Seat Belt, Velcro Close,1/ea, EA
STDS855	Seat Belt,60"" Auto-type,1/ea, EA
STDS820	Telescoping IV Pole,W/C, 1/bx, BX

ACCESSORIES	Description
STDS856	Seat Belt,60"Velcro-type,1/ea, EA
STDS806	Anti-Fold/Theft Device for w/c,1/ea, BX
STDS834	OverheadAnti-Theft Bar,Single,1/ea, EA
STDS801GT	WheelLockExtension,ViperGT,SSP2,1/ea, EA
WASR	Limb Support, Right,1/cs, CS
WASL	Limb Support,Left,1/cs, CS
STDS1034	Wheelchair Cane/Crutch Holder,1/ea, EA
STDELR-AL	ArticulatingElev.Legrest, Std,1pr/cs, CS
STDSNUT	Tinnerman Nut,1pr/bx, EA
14300	16x17.5 Gen.use adj back cush 16-21in, EA
PARTS	Description
STDSFLNB	FullLengthNylonArmPad,1/ea, EA
STDS3J2418	Seat Uphol Nylon 18, SSP1,Cruiser,1/ea, EA
STDS3J2422	Frame Cap,Cruiser3,1/ea, EA
STDS2015	Upholstery Hardware, Set of 8, EA
STDS004609-9	Hand Rim Screw Set of 9,1Bag, BAG
STDS8M4603	BrakeTipSleeve,Cruiser,SSP, 1/ea, EA
WB 8036	Hand Grip, 1/ea, EA
STDS4S1503	Folding Hinge, TR39, 1/ea, EA
STDS4S4501	PushHandle,SilverSportW/FoldDownBack,1e, EA
STDS4S4502L	Brake,Left,SilverSportW/FoldDownBack,1e, EA
STDS4S4502R	Brake,Rght,SilverSportW/FoldDownBack,1e, EA
STDS4S4505L	SideFrame,Lft,SlverSprtW/FoldDownBack,1, EA
STDS4S4505R	SideFrame,Rgt,SlverSprtW/FoldDownBack,1, EA
STDS4S1069	HangerPins,CS/SilverSport/Cruiser, 4/pkg, PKG
STDS001000	Axle Cap 8mm, 1ea, EA
STDS3J24SF	Footrest Set,Cruiser3,SSP, 1pr/set, EA
STDS3J2421	HubCap,RearWheel,Cruiser3,SSP,BS,1/ea, EA
STDS3J2400	Handrim,Cruiser3,1/ea, EA
STDS3J2413	Rear Axle Bearing,Cruiser3,1/ea, EA
STDS3J2431	Caster Axle Bolt, Silver Sport 1, 1/ea, EA

Value, durability, and comfort in an exclusive recliner design

Unsurpassed quality, durability, and design are standard for Winco's basic recliner. Blow-molded side panels, built-in hand-grips, total-lock steel casters, and round, powder-coated steel frame make the LifeCare Recliner a perfect choice for value.



5851 - w/ tray
5861 - w/out tray

KEY FEATURES

- Non-porous tray
- Plastic molded side panels
- Padded armrest with arm guard
- "No pinch" safety zone

PRODUCT SPECIFICATIONS

- 1 Push-handle for easy maneuverability.
- 2 Comfortable, padded armrests with guards to keep upholstery free from damage.
- 3 Non-porous tray, stores on side of chair.
- 4 5" Total lock casters (in rear) allow for better handling and control.
- 5 3 position lock-bar allows for safe, comfortable positioning.
- 6 Plastic side panels help to create a "safe zone" for patient care without pinch points.



5851/5861

Seat Height	.20" (50.8cm)
Seat Width	.19" (48.3cm)
Seat Depth	.20" (50.8cm)
Overall Height	.46.5" (118.1cm)
Overall Width	.26.5" (67.3cm)
Back Height Above Seat	.32" (81.3cm)
Overall Length (Upright)	.41" (104.1cm)
Overall Length (Reclined)	.63" (160cm)
Weight	5851: 85 lbs. (38.6kg)
	5861: 80 lbs. (36.3kg)
Weight Capacity	.275 lbs. (124.7kg)

SPECIFICATIONS

OPTIONS



TB-133 **TB**



IV Pole **IV**



Flip-up Footrests
F500



Torso Support
TS00



Contoured Headrest
CH00



Lateral Support
LS00



Side Cushion
SC00

CONTACT US

To arrange a demonstration or to speak with one of our associates, please feel free to contact us at:
800-237-3377 | WincoMfg.com | 5516 SW 1st Lane, Ocala, FL 34474 | Info@WincoMfg.com

Portable Oxygen Unit (Empty)

- E Size Aluminum Empty Tank
- 0-15 LPM Regulator with Contents Gauge
- Cylinder Transport Cart
- Nasal Cannula
- Plastic Wrench
- Empty O2 Cylinder



Long Spine Board

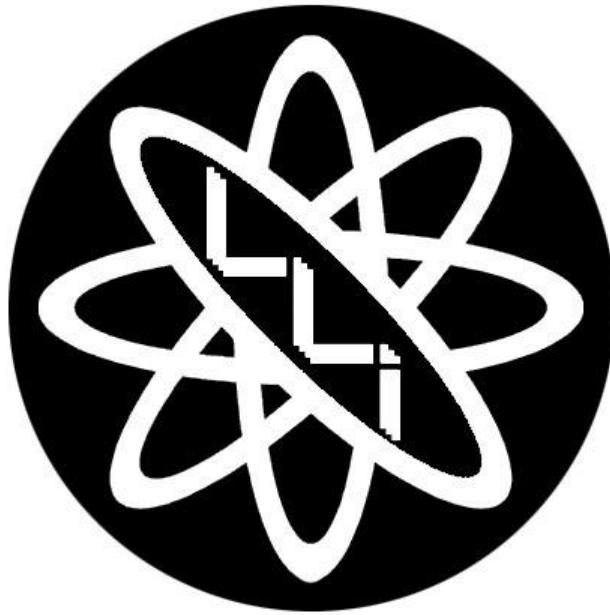
- Approx. 1,100 lbs. weight rating
- Size: 16"W x 72"L, 1 3/4" thick
- Horizontal slots to accommodate optional HeadLoc Head Immobilizer
- Runner supports to maximize x-ray capability without shadowing spine
- Non-metallic pins



Wound Simulation Kit



Medical Laboratory Equipment Package*



www.LLI.com

sales.dept@lli.com

1-800-334-4943

*models and specs subject to change

Centrifuge

Block Scientific, a leading laboratory equipment supplier in New York, offers quality centrifuges from leading manufacturers. USA E8 Fixed-Speed, Angled 8-Place Centrifuge with Timer is a high performance laboratory centrifuge. Manufactured by LW Scientific, this centrifuge model includes an angled 8-place tube rotor, eight 15ml tube sleeves, and eight 13x75mm tube sleeve inserts.

E8 Fixed-Speed centrifuge comes with an auto-calibrating speed function for precision results. An auto-brake system included in this model stops the rotor in less than 30 seconds, saving time in busy labs. It operates at a fixed speed of 3,500rpm (for blood only). The device also comes with an auto-off 30 minute timer with bell.



Other features and improvements include lower chamber temperatures for cooler test-tube samples, higher speeds for faster and cleaner separations, and shorter height to fit under any cabinet. The device also assures quiet vibration-free operation for a peaceful work environment.

E8 Fixed-Speed Centrifuge— Product Features

- Suction-cupped feet prevent slipping
- Maximum RCF=1,534g
- Lid safety shut-off switch
- Holds 3ml to 15ml size tubes
- Clear view port in lid for using tachometer
- 12 volt DC maintenance-free motor
- 110/220v auto-switching power adapter
- (CE, UL, cUL approved)
- Accurate speeds for specific g-forces
- Proper separations without cell damage

Microwave Oven

- Grill power : 1100Watt
- 10 Power Levels
- Time and weight defrost
- Express Cooking
- 99-Minutes, 99-Second Digital Timer
- Memory & kitchen timer
- 6 auto-cooking menus

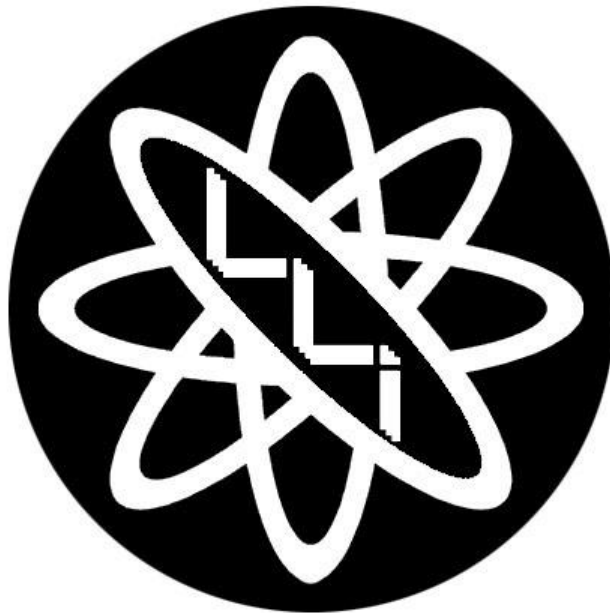


Microscope

- Most affordable binocular with mechanical stage
- 4 magnification levels: up to 1,000x
- Full mechanical stage for easy slide handling
- Coaxial coarse/fine focus for ease of use
- Professional Abbe 1.25 NA condenser
- Bright, long-life LED illumination
- Optional Summit Series digital microscope camera
- Recommended for Grades 4-12



Advanced Instrument Package*



www.LLI.com

sales.dept@lli.com

1-800-334-4943

*models and specs subject to change

AED

This new and improved AED trainer with plug-in module has all the functions needed to teach students about AED operation - without breaking your equipment budget. This lightweight, value-priced trainer offers bilingual scenarios (English and Spanish), a fully functional remote control, volume adjustment and pause functions, adult and child connectors, and pads. Includes eight pre-programmed scenarios to simulate various cardiac arrest cases. Audible metronome paces CPR chest compressions. Audio port allows you to connect speakers so the entire class can hear scenarios as they play out - extending training even while they wait. Plug-in design allows for easy upgrades and language changes. Comes in a 10-1/2 in. x 8 in. x 2-3/4 in. nylon carrying case. Base requires three AA batteries (not included). Remote control requires two AAA batteries (not included). AED trainer measures 7 in. x 5-3/4 in. x 2 in. Meets 2005 ECC guidelines. One-year manufacturer's warranty against defects.



EKG Machine & Supplies

- 6-Channel ECG machine with interpretation (02-43-9020) includes sample pack of electrodes
- Rolling tilt stand
- Four-part heart dissection model
- ECG ruler
- ECG caliper
- Learning Arrhythmia Recognition CD-ROM
- Learning Electrocardiography CD-ROM



Glucose and Cholesterol Monitor

- This kit includes everything you need to teach students to monitor levels of cholesterol and glucose in blood.
- Includes:
- Accutrend® Plus meter
- Quick reference guide
- User's manual
- Carrying case
- (4) AAA batteries

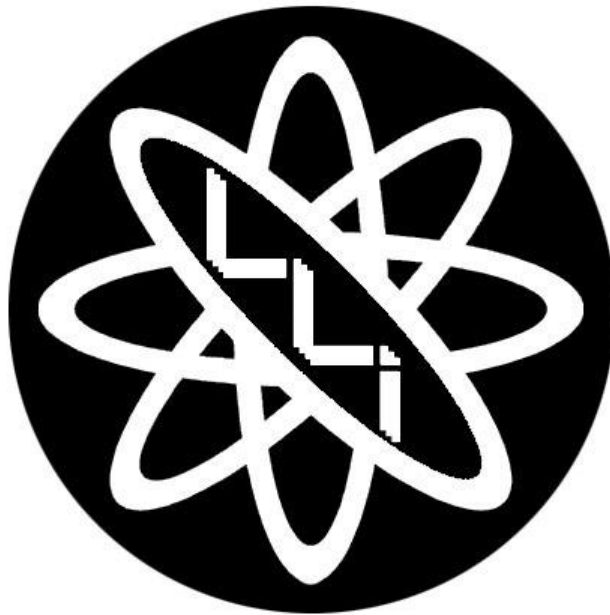


Pulse Oximeter

- One-button operation
- Accurately measures oxygen saturation of arterial hemoglobin and pulse rate
- Accommodates a wide range of finger sizes: circumference approx. 20-75 mm, user weight approx. 33 lbs.-242 lbs.
- Large LCD display with red digital readout
- Display blood-oxygen saturation (SpO₂), pulse rate and pulse bar
- No prescription required
- Low-battery indicator
- Automatic shut-off
- Requires 2 “AAA” batteries (included)
- Latex-free
- Includes lanyard and detailed English/Spanish instructions
- One-year limited warranty



Models & Mannequin Package*



www.LLI.com

sales.dept@lli.com

1-800-334-4943

*models and specs subject to change



GERi™/KERi™ The Nursing Skills Manikins

The ideal manikin for all OBRA required training!

GERi™ – LF04040U, LF04001U, LF04030U, LF04003U, LF04005U (Light)
LF04115U, LF04116U, LF04117U, LF04118U, LF04119U (Medium)

KERi™ – LF04021U, LF04020U, LF04022U, LF04023U, LF04026U (Light)
LF04120U, LF04121U, LF04122U, LF04123U, LF04124U (Medium)



Life/form®
by Nasco Healthcare



Congratulations for choosing a **GERi™/KERi™** Nursing Skills Manikin. This realistic, fully functional, light-weight nursing manikin comes with a superior range of motion and allows you to simulate over 35 nursing and medical procedures. The quality and simple design makes this manikin easy to use and care for while teaching basic patient care techniques, so please familiarize yourself with this manual before using the manikin for training. Five-year warranty. Actual product may vary slightly from photo. Nasco reserves the right to change product color, materials, or function as needed.

Main Features on Every Basic, Complete, Advanced, Auscultation and Advanced Auscultation **GERi™** and **KERi™** Manikin:

- **GERi™** has an elderly appearance with skin wrinkles and folds
- **KERi™** has a non-age-specific appearance
- Lightweight — approximately 28 lbs.
- Full-size adult manikin — measures 58"
- Overall female appearance, with simple conversion to male with removal of wig and attachment of male genitalia
- Visual Inspection:
 - Normal and cancerous mole
 - Stage 1 sacral ulcer
 - Dilated and constricted pupils
 - Reddened skin folds
- Patient Care Simulation:
 - Bandaging and wound dressing
 - Bed baths
 - Clothing changes
 - Denture placement and removal — upper and lower
 - Ear canal irrigation, otic drops, and hearing aid placement
 - Eye irrigation
 - Finger and toe manipulation
 - Hair care washing and combing
 - Intramuscular injection sites — arm, thigh, buttock
 - Oral and nasal hygiene — lavage, gavage, and suctioning
 - Ostomy care — ileostomy and colostomy tissue maintenance and appliance application, lavage, and suctioning
 - Patient positioning
 - Patient transfer techniques
 - Pericare
 - Range of motion
 - Tracheostomy care — lavage and suctioning

Choking Charlie

Realistic anatomy and response using simulated boluses provide instructors with an excellent tool for instructing and practicing this lifesaving technique.

- Lifelike torso manikin
- Cast from a human specimen
- Heimlich Abdominal Thrust Maneuver training with simulated food boluses





Ostomy Care Simulator

LF00906U



Life/form
by Nasco Healthcare

CPR Infant

- Eliminates cross contamination
- Realistic anatomy
- Ventilation requires proper head tilt to open airway
- Exhaled air from mouth and nose creates realism in training
- Chest rises with proper ventilations
- Stomach clearly shows inflation
- CPR or bag mask ventilation is possible
- Rib cage has realistic feel
- Lever allows complete airway obstruction
- All parts in contact with the trainee's exhalations are for individual use only
- Face pieces are easily disinfected
- Air head bags are single-use and disposable
- After class, Chris Baby cleans up in a few minutes - no disassembly or inside cleaning required
- Includes five face pieces, one hundred air head bags, and a soft carrying case.



CPR Child

Includes two faces, two airways, six manikin wipes, soft pack, and directions. Soft pack doubles as training mat.

The Little Junior QCPR manikin includes measurement and feedback technology that takes the guesswork out of instruction—all from the palm of your hand. Little Junior QCPR delivers real-time and summative feedback on key parameters of quality CPR using free apps for smartphones and tablets, including the QCPR Instructor App for multiple student monitoring, and the QCPR Learner App for students to monitor their own performance. The SkillGuide with Extension Cable provides a tethered feedback option, and can be used by itself or as a supplement to the apps.



CPR Adult

Extremely sanitary. Prevents cross contamination with an individual face piece for each student and disposable, non-rebreathing airway.

Lifelike features. Head tilt/chin lift mobility. Plus, all essential landmarks, including navel for obstructed airway practice. Longer torso for abdominal thrusts. Realistic rib cage overlay for landmarking.

Quick clean up. After class, the inexpensive face pieces can be discarded, or sanitized and reused. Airways are disposable.

Durable and portable. Built to withstand high-volume usage. Easy to transport.\

Save time and money. Order extra face pieces and airways to avoid shortages later.



CPR Adult/Child 5-Pack

Professional-quality manikins at a fraction of the cost! Comprehensive design allows for practice of Heimlich maneuver and abdominal thrusts, as well as CPR and mouth-to-mouth breathing. Realistic anatomical markings (Adam's apple, carotid arteries, navel, rib cage, chest notch) make it easy to learn correct hand placement for checking pulse, performing chest compressions, and more.

Provides valuable student feedback and other important features:

- ☑ Head tilt/chin lift required to open airway
- ☑ Proper anatomical landmarks
- ☑ Audible compression "clicker" to ensure proper technique.

Ideal for group training - allows each student to have their own manikin for maximum practice time. Easy-to-clean heads are dishwasher safe and can easily be sanitized. Lung bags are replaceable. Designed to meet American Heart Association criteria for desirable manikin features. With age selector dial that adjusts chest compression piston for learning adult or child techniques. Each set is packed in a rugged nylon carrying case with a supply of 50 face-shield lung bags and an insertion tool. Five-year warranty.



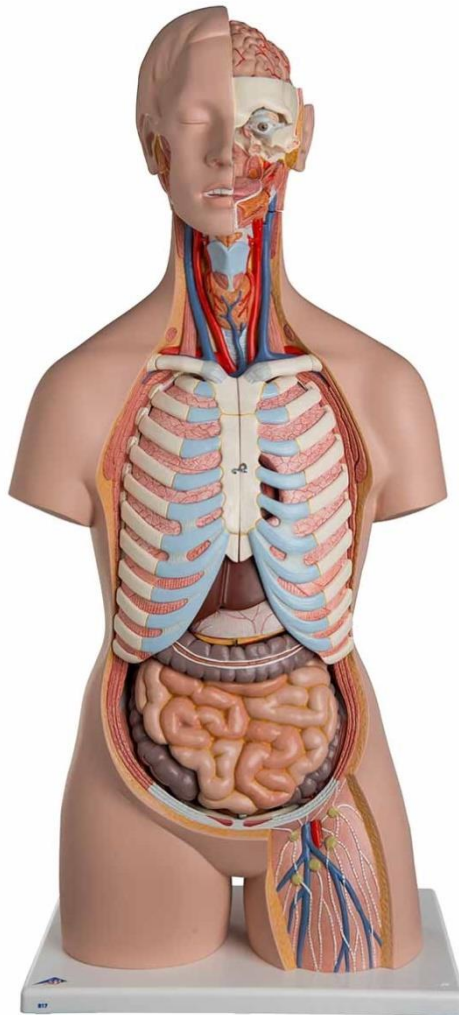
Basic Buddy Fast Pack

Includes one Basic Buddy™, one Baby Buddy®, two lung installation tools, 10 Basic Buddy™ lung bags, 10 Baby Buddy® lung bags, and one small carrying bag. Only use AED training pads designed for foam body manikins (see LF06501U-LF06503U). Five-year warranty.



Human Torso

- 2-part head
- 2 lungs
- 2-part heart
- Stomach
- Liver with gall bladder
- 2-part intestine system
- Front kidney half
- Comes with Torso Teaching Guide. 34-1/4 in. x 15 in. x 9-7/8 in.



Infant Mannequin (Male & Female)

PEDI® newborn simulator represents a 0- to 8-week-old baby

- Soft and flexible facial skin
- Self-molded hair
- Realistic eyes
- NG exercises to demonstrate tube feeding and gastric suction
- Simulated ear canal
- Tongue may be moved from side to side
- Lifelike, rotating arms and legs
- Soft hands, feet, fingers, and toes
- Heel stick and finger prick technique
- Soft upper body skin
- Bathing and bandaging activity
- Intramuscular injection site in upper thigh
- TB test site
- Urethral passage and bladder
- Male and female catheterization (interchangeable)
- Removable internal tanks
- Enema administration
- Comes with T-shirt, diaper, soft nylon carry bag, and instruction manual

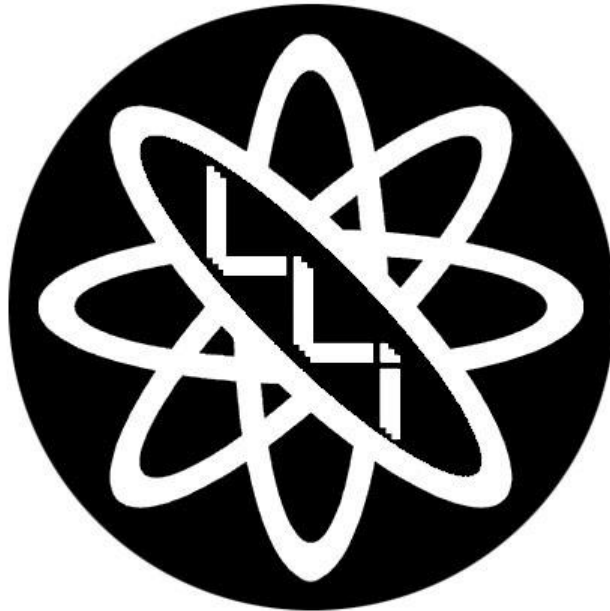


Skeleton

This economical, life-size articulated adult plastic skeleton is ideal for teaching the basics of anatomy when intricate textural nuances of the bone are not required. The arms and legs are removable for study. Features nerve branches, vertebral artery, and herniated lumbar disk. Skull includes movable jaw, cut calvarium, suture lines, and three removable lower teeth. Mounted on a sturdy 16 in. W x 3 in. H metal base. Base includes caster wheels for easy transport. Includes study guide. Skeleton measures 5 ft. 6 in. tall.



Exam Room Equipment*



www.LLI.com

sales.dept@lli.com

1-800-334-4943

*models and specs subject to change

Exam Table

What makes Ritter® the most purchased brand of exam tables? It's our willingness to research, study and listen so we can meet your needs-and your budget. The Ritter® 204 is the culmination of years of research in design, comfort and functionality in a manual examination table, you asked-we listened:

- Storage - 3 pass-through drawers (accessible from either side of the table)
- Safety - enlarged foot section for easier access to the table
- Asepsis - one-piece, seamless drawers for easy cleaning of spills
- Duplex, hospital grade electrical receptacle on patient's left side
- 500 lbs. Capacity
- Electrical receptacle standard
- Styled seamless or soft touch stitched upholstery
- Pass-thru drawer design, no need to specify RH or LH
- Manual back with air spring assist
- Meets UL 60601-1 and CAN/CSA C22.2 No.601.1-M90 standards
- Holds 21 X 3.5 Inch paper roll
- Base Only
- Without top



Scale - Adult

- Platform Size: 10-1/2" (w) x 14" (d)
- Platform mat: non-slip black
- Professional Dual Reading Height Rod: 23-5/8" - 84" / 60 cm - 213 cm
- Powder coated, non-rust inside and out for extended life
- 10 Year Limited Warranty



Scale - Infant

Detecto's baby scale is perfect for teaching how to perform a basic diagnostic assessment: taking an infant's weight.

- 9V alkaline battery (not included)
- 3V CR2032 lithium backup battery (included)
- 20.6" L x 10.5" W x 4" H inch (524 x 267 x 102 mm).
- Displays date and time on LCD screen
- Stores previous weight
- Capacity: 44 lbs. (20 kg)

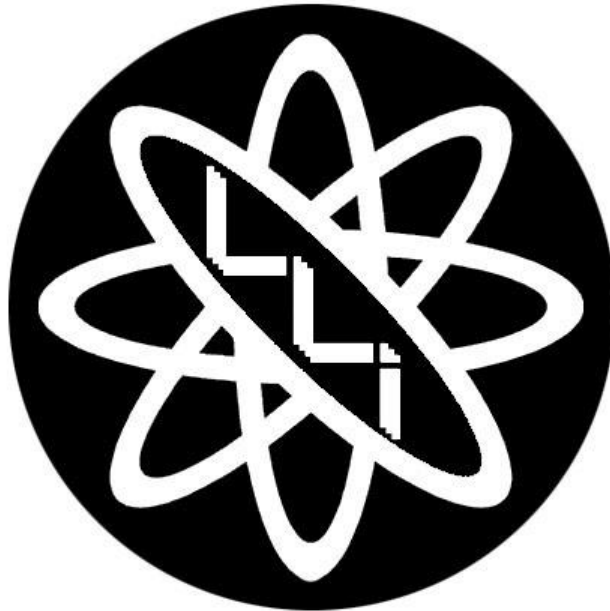


Privacy Screens/Curtains

These Privacy Screens feature 2" diameter casters for transporting convenience. They are excellent for temporary privacy in patient/resident rooms when replacing soiled cubicle curtains. All panels are anti-bacterial and meet California flame resistant requirements. Each section measures 68"H x 19"W (includes casters).



Patient Room Equipment*



www.LLI.com

sales.dept@lli.com

1-800-334-4943

*models and specs subject to change

HILL-ROM 850 HOSPITAL BED ROOM PACKAGE



HOSPITAL BED (Hill-Rom 850)

FEATURES:

- Height / Floor to Top of Surface / High Position: 31" (78.7 cm)
- Height / Floor to Top of Surface / Low Position: 17" (43.2 cm)
- Overall Length / With Roller Bumpers / Fully Extended: 93-1/2" (237.5 cm)
- Overall Length / With Roller Bumpers / Fully Retracted: 79-1/2" (201.9 cm)
- Overall Length / Without Bumpers / Fully Extended: 91" (231.1 cm)
- Overall Length / Without Bumpers / Fully Retracted: 77" (195.6 cm)
- Overall Width / Siderails Up: 41-1/2" (105.4 cm)
- Total Hilow Travel: 14" (35.6 cm)
- Sleeping Surface: 36" x 82" (91.4 cm) x 208.3 cm)
- Weight / Bed with Casters: 346 lb (156.9 kg)
- Maximum Patient Weight: 500 lb (226.8 kg)

MATTRESS (Gravity 7 Long Term Care Pressure Redistribution Mattress)

- Most economical yet efficient therapeutic foam mattress maximizes value and comfort with 3 full layers of foam
- Top layer uses unique die-cutting and a true memory foam heel section to optimize zoned pressure redistribution.
- Bottom layer provides full length horizontally scored articulation cuts extending the durability and life of the mattress significantly.
- Stretch cover is fire retardant, fluid, and tear resistant, low shear and easy to clean.
- High Density Foam Perimeter provides solid edge support and facilitates safe patient transfers.
- Available with or without raised side rails.
- Cover Material: Stretch, Fluid-Resistant Nylon Top | Waterproof Vinyl Bottom
- Fire Rating: CFR 16 Part 1633 Federal Fire Code
- Weight Capacity: 350 lbs.
- Warranty: 7 Year Limited Foam | 1 Year Cover

BEDSIDE CABINET (One Drawer/One Door)

- 24.25"W x 16.75"D x 30.75"H
- One Door/One Drawer
- Casters
- Weight: 65 lbs

OVERBED TABLE (Model 4528U)

FEATURES:

- 18"W x 32"L High Pressure laminate top
 - chrome plated 11 and 12 gage welded tubular steel column and base
 - 2" twin wheel casters
 - 30"H - 45"H adjustable in 15 one inch increments
- (Optional Model: 1010H)

STANDARD FEATURES:

- Chrome base finish
- Standard laminate options

Piedmont Medical, Inc.
PO Box 1278, 500 Kapp St. Dobson, NC 27017
Phone: 800-433-3255 Fax: 877-433-3255

Headwall System



The Simulated SlimRail Headwall is a non-functional horizontal wall mounted headwall, perfect for simulation. This headwall façade is the most cost-effective teaching headwall available.

- Surface mount size: 30" long
- Non-functioning
- Wall mounted
- Includes complete accessories package: Oxygen and air flow meters, humidifiers, nasal cannulas, vacuum regulator, suction collection canister and ring holder
- Mounting hardware not included
- Easy to install

Specifications

- Simulation Rail Size: 30" long
- Non-functioning
- Wall mounted
- 1-Vacuum
- 1-Air
- 1-Oxygen
- 1-Slide
- 2-Duplex Outlets
- Suction Canister
- Oxygen Flowmeter
- Medical Air Flowmeter
- Vacuum Regulator
- 1 Year Warranty

Isolation Cart

Includes AKL-Y-4 Four-Drawer Cart, PSR-1 Tubular Railing, AUH-1P Utility Hooks, and ACR-1 Coat Rack.



HEALTH OCCUPATIONS PROGRAM REQUIRED EQUIPMENT AND SUPPLIES

Learning Labs, Inc.	Health Science Occupation Equipment & Supplies			
PO Box 1419				
Calhoun, GA 30701				
#800-334-4943			3/1/2019	
Fax #706-629-6761				
	Description		Total	
	Basic Patient Care Equipment Package		\$170.39	
	Advanced Patient Care Equipment Package		\$817.57	
	Medical Lab Equipment Package		\$350.59	
	Slides of Blood Smears		\$481.22	
	Advanced Instrument Package		\$227.88	
	Models & Mannequin Package		\$467.76	
	Exam Room Equipment		\$188.23	
	Patient Room Equipment		\$282.42	
	First Aid		\$1,438.41	
	Non-Capital Equipment (items less than \$100.00)			
	Advanced Patient Care Package		\$4,402.17	
	Medical Laboratory Equipment Package		\$1,046.31	
	Advanced Instrument Package		\$4,294.47	
	Models & Mannequin Package		\$6,745.29	
	Exam Room Equipment		\$3,488.13	
	Patient Room Equipment		\$6,106.60	
	Capital Equipment (all items are equipment and exceed \$100)			

BASIC PATIENT CARE EQUIPMENT PACAKGE

ITEM #	DESCRIPTION	QTY
0413362	Bath Basins [1 per bedside unit]	1
04-39-111	Bedpans: standard	1
04-39-100	Bedpand: orthopedic	1
04-74-3549	Courtesy admissions kit [2] includes wash basin, enesis basin, pitcher, soap, soapdish, toothpaste, toothbrush, mouthwash, deodrant, razor, shaving cream, shampoo, and comb	1
H97510	Denture cup w/lid	1
LL-DR8	Dentures w/ denture cup & lid	1
H30010	Emesis basins	1
151002	Eye shield - <i>Mask w /fluid shield 25/bx</i>	1
04-82-PGB	Patient gowns	1
3672	Triangular bandages - box of 12	1
05-39-140	Urinals	1
05-55-1766	Bluepads - <i>200 case</i>	1
05-55-0095	Bed Pads, Quilted Reuseable	1
C7	Comb	1
413	Mouthwash	1
05	Razors - 10 PK	1
NRB4463	Shampoo & Body Wash	1
SC15	Shaving Cream	1
TB40	Toothbrush	1
TP15	Toothpaste	1
123	Deodorant	1

ADVANCED PATIENT CARE
CAPITAL EQUIP PACKAGE

ITEM #	DESCRIPTION	QTY
AE8825	Stretcher	1
MX8628FR	Wheelchair	1
04-76-500	Gerichair	1
07-71-500E	Oxygen tank <i>portable unit/empty</i>	1
AE585P	Long spine board	1
AA4625	Wound simulation kit	1

ADVANCED PATIENT CARE
NON-CAPITAL EQUIPMENT PACKAGE

ITEM #	DESCRIPTION	QTY
04-23-ALAC	Cane, adjustable	1
AE832	Cervical collar	1
8115A	Crutches, adjustable - <i>adult size</i>	1
0546022122FR	Gastrostomy feeding tube w/Y port (Kangaroo) 5 pk	1
04686220	Gait belt	1
AE5338	Isolation kit [mask 1, gloves 1, biohazard bag 3, gown 1, goggles 1]	1
AC540	IV pole	1
053914GS	Naso-gastric sump tube	1
07-71-1103	Oxygen cannula [prong & nasal cannula]	1
07-71-1041	Oxygen mask	1
07-71-1095	Oxygen tent - <i>face tent mask</i>	1
400	Oxygen tubing - 7 ft	1
LL-04169100	Vest restraint	1
LL-04169128	Body belt restraint	1
4109	Tourniquets - box 25	1
AE646	Long spine board strap 2 straps per set/ 5ft	2
	Splints [14]	
EM500	Sam Splint- 4 1/4 x 36"	1
EM501	Sam Splint - 4 1/4 x 18"	1
EM502	Sam Wrist Splint - 4 1/4 x 9"	1
EM505	Sam Finger Splint	1
04-76-WALK	Walker, adjustable	1
LL-04169011	Wrist / ankle restraint - <i>pair</i>	2
802002	Catheter bags	1
802414	Catheters	1
802417	Colostomy bags/pouch - <i>box of 10</i>	1

MEDICAL LABORATORY
CAPITAL - EQUIPMENT PACKAGE

ITEM #	DESCRIPTION	QTY
09-30-6CMT	Centrifuge	1
AG1186	Microwave <i>1 cubic foot</i>	1
T-1903	Microscope	1

MEDICAL LAB
NON-CAPITAL EQUIPMENT PACKAGE

ITEM #	DESCRIPTION	QTY
05-86-1900	Catheter Care Kit	1
05-86-2016	Catheterization Foley Tray Kit	1
05387145	Urine test tape and/or sticks <i>100 strips/ tests for 10 diff. things</i>	1
8798811	X-rays [examples]	1
1305-1	Slides, glass, microscope <i>plain 72 bx</i>	1
SB15325M	Immersion oil	1
SA08888M	Lens paper	1
1305-2	Slides, glass, microscope <i>box of 72 frosted</i>	1
06392051	Specimen cup & labels	50
06-61-32G	Medicine bottles, liquid and pill [Dozen]	1
06054305	Sterile culture swabs (Bag of 100)	1
06-86-1443	Sterile Dressing Kit	1
0946GT07	Vacuum blood collection tubes 100 per box	1

SLIDES OF BLOOD SMEARS

ITEM #	DESCRIPTION	QTY
875053	Set of 15 human pathology slides	1
875055	Slide set - Human Physiology (set of 25)	1
366804	Chemical blood - TYPING KIT	1
36B0019	ABO and Rh blood typing kit simulated	1

ADVANCED INSTRUMENT
CAPITAL - EQUIPMENT PACKAGE

ITEM #	DESCRIPTION	QTY
SB47847	Automatic External Defibrillator Trainer [AED]	1
01-43-EK1P	EKG machine and supplies	1
05-38-PLUS	Glucose and Cholesterol Monitor (MONITOR ONLY/test strips sold separately) Accutrend	1
SB48022U	Pulse oxymeter - fingertip	1

ADVANCED INSTRUMENT
NON-CAPITAL EQUIP PACKAGE

ITEM #	DESCRIPTION	QTY
AE600	AED Trainer pads - 1 pair	1
05-38-0025	Cholesterol Test Strips Accutrend	1

MODELS AND MANNEQUIN
CAPITAL EQUIP PACKAGE

ITEM #	DESCRIPTION	QTY
AB2500	Adult manikin -complete Keri female/male	1
AA5450	Choking Charlie - Charlie is a brand	1
AB1070	Colostomy / ileostomy	1
AA4100	CPR infant - lifelike/full body	1
AA5875	CPR adult - lifelike/ adult torso	1
AA5770	CPR child - lifelike/ 7yr old torso	1
LF06100U	CPR Prompt Training & Practice Adult/Child 5 pk	1
LF03731U	Basic Buddy Fast Pack [includes 1 infant& 1 adult/child]	1
0708-00	Human torso	1
SB32863UG	Infant manikin, male & female	1
AA9010	Skeleton	1

MODELS AND MANNEQUIN
NON-CAPITAL EQUIP PACKAGE

ITEM #	DESCRIPTION	QTY
	Models / manikins	
340	Breast cancer	1
357	Testicular cancer	1
225	Ear	1
HS1024	Heart	1

EXAM ROOM
CAPITAL EQUIP PACKAGE

ITEM #	DESCRIPTION	QTY
AET8G	Exam table - professional table w/storage,stirrups,outlets, etc.	1
AC600	Scale, balance, adult	1
04-33-243	Scale, balance, infant	1
AE171	Screens or curtains, privacy	1

EXAM ROOM
NON-CAPITAL EQUIP PACKAGE

ITEM #	DESCRIPTION	QTY
2078	Chart holders	1
02-63-1510	Exam lamp	1
04-31-50	Snellen eye chart [visual acuity charts]	1
02-72-3184	Deluxe Exam Table Paper	1
GRA221	Exam Gowns, disposable 50 case	1

PATIENT ROOM
CAPITAL EQUIP PACKAGE

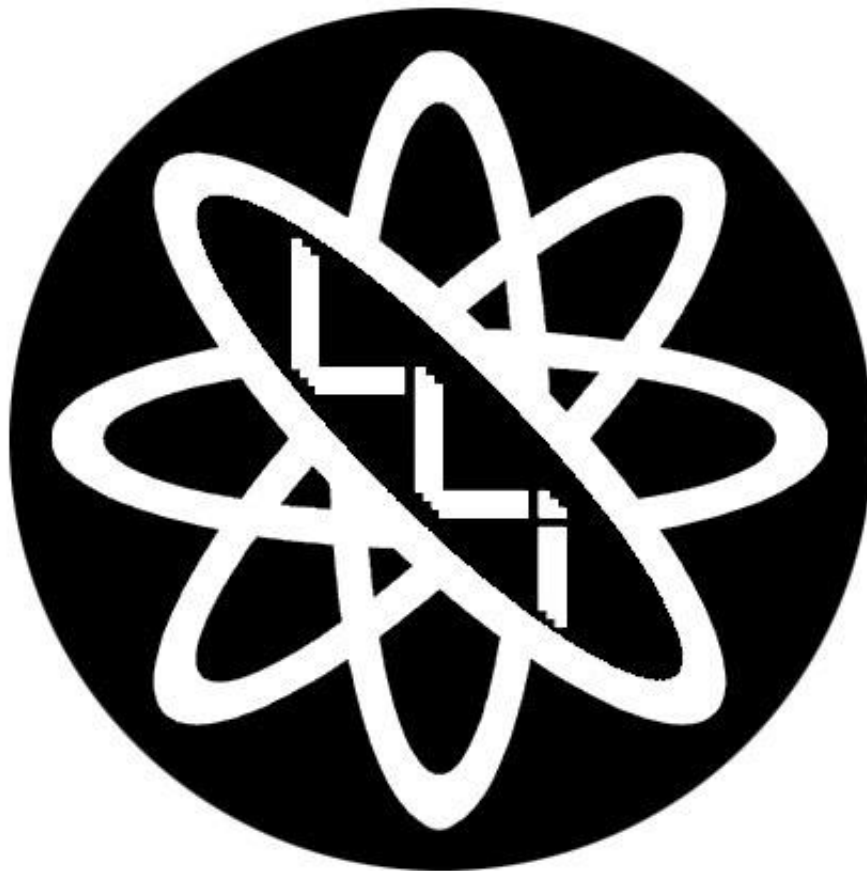
ITEM #	DESCRIPTION	QTY
LLIEBEDPKG	Hospital bed package Hill-Rom Suite, as seen in hospitals, includes bed w/mattress, bedside stand and over bed table	1
03711006	Headwall System, Simulate medical outlets, oxygen, vacuum, air, etc. Wall mount behind bed.	1
AKYL4	Isolation cart - [as seen in hospital rooms]	1

PATIENT ROOM
NON-CAPITAL EQUIP PACKAGE

ITEM #	DESCRIPTION	QTY
647058	Biohazard bag & container - 1con/100bags	1
03-78-2GL	Biohazard sharp disposable container	1
03-78-3300	Sharp disposal Complete Wall Unit w/ glove box	1
56259	Biohazard sharps 5qt container for wall unit	1
826000	Bed Linen package	1
96304	Bedside commode	1

FIRST AID PACKAGE

ITEM #	DESCRIPTION	QTY
28220	1 1/2" White Tape (case of 32 rolls)	1
4019	1" X 3" Dressings	1
36059M	1lb Skin Lube	1
84620	2" Expandover (24 rolls)	1
52055M	3-Ply Towels (case of 500)	1
3242	4" x 4" Gauze Pads (bag og 200)	1
3664	4" Elastic Wraps (10 rolls per box)	1
2618-34	4-Wing Dressings	1
207435	6" Elastic Wraps (10 rolls per box)	1
25702000	Bandage Scissors	1
25019	Bandages (12 rolls)	1
19152M	Body Fluid Kit	1
54056M	Bottle of Iso Quin	1
HYDD0012	Bottle of Peroxide 16 oz.	1
AG1111	Bottle of Sterile Eye Wash 16 oz	1
23040M	Butterfly Closures	1
69610	Can of Nitrotan 8oz	1
19-9814	Comfort Mask, surgical w/ties	1
31002M	Cotton Tip Applicators	1
4053	Disposable CPR Mask	1
67803	Disposable Pillowcases (case)	1
04-82-DRAW	Draw Sheets	1
AD101	Dual-Head Stethoscope	1
12003	Eye Care Kit, 30 individual packs	1
63300	Felt Kit	1
878063	First Aid Kit	1
19171M	Fluid Spill Kit	1
63180	Foam Kit (padding)	1
4120	Gauze Sponges 12 ply 4'X4' sterile (CASE)	1
63540	Heel and Lace Pads	1
29400M	Ice Bags (12 bags per box)	1
268774	Jar of 2nd Skin (48/jar)	1
2618-37	Knuckle Dressings	1
03-47-SPFL	Latex Disposable Gloves,small	1
03-47-MPFL	Latex Gloves medium	1
3562	Medical Tape (box of 12)	1
00304	Moleskin, 12" X 5 yd	1
15605M	Oral Digital Thermometer	1
76360	Replacement Blades (for tape cutter)	1
SB28521U	Repspirator Mask	1
2012	Standard Procedure Mask	1
DYN4314	Sterile Tongue Depressors	1
AD105	Stethoscope, child	1
DYN1163	Tube of Bacitracin, 1oz tube	1
36058M	Tube of Skin Lube	1
DYN1185	Tube of Triple Anitbiotic Oinment 1oz	1
21469	Underwrap	1
760LF	Upper Arm Blood Pressure Monitor	1
235	Vinyl Gloves	1
6015	Wrist Blood Pressure Monitor	1
30003M	XL Dressings, 10"X30" sterile	1
76420	Zip Cut Tape Cutters	1



www.LLI.com

sales.dept@lli.com

1-800-334-4943