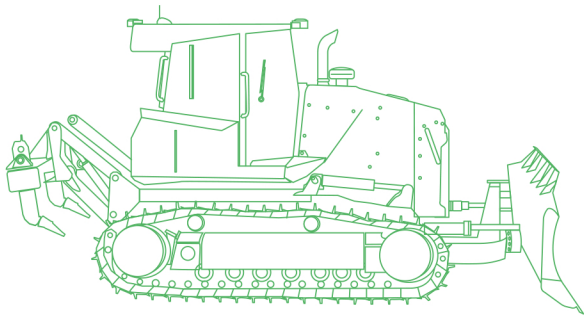


Dozer Simulator Training Pack



Simulated Equipment Specs

Machine weight: 22 t (24 US t)
Engine: 152 kW (204 HP)
Hydrostatic transmission
6-way blade

Blade capacity: 4.3 m³
Oscillating tracks
Halogen working lights

Overview /

The Dozer Simulator Training Pack is part of CM Labs' product line of earthmoving and lifting/crane training packs, all of which can be run from a single Vortex simulator. With progressive exercises, on-screen tips, and built-in performance indicators, the Dozer Simulator Training Pack enables trainees to learn at their own pace, or as part of an instructor-led training curriculum.

Key features & benefits /

The Dozer Simulator Training Pack provides trainees with the unique sensation of pushing soil and aggregate materials, promoting precision operating techniques as a result. Trainees can perform both heavy excavation and fine grading with the 6-way blade, and manage their work zone by controlling the position of the dump truck. This encourages the development of operator accuracy and efficiency, in an immersive, risk-free environment.

A progressive learning program

ranging from basic controls to advanced techniques that focus on operators' efficiency.

Performance metrics and reporting

that show trainees how to safely handle equipment and perform efficient dozer operations.

Best-of-class simulation

that ensures real skills development and learning opportunities that are transferable to the real machine and not always available on real equipment.



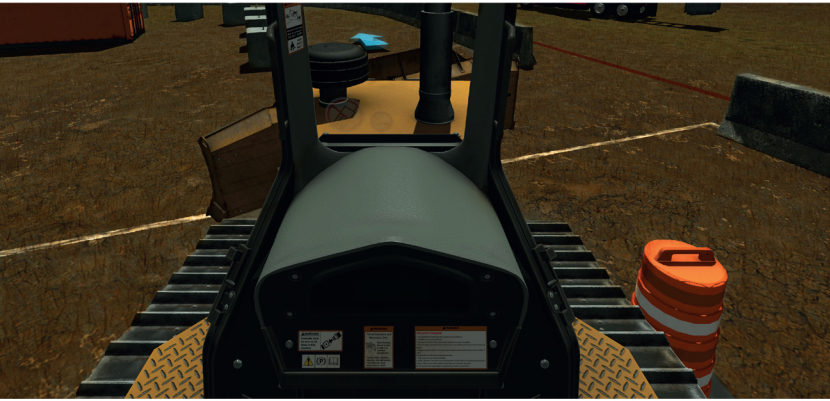
Best-in-class simulation provides real learning benefits

Like all of CM Labs' solutions, the machine inside the training pack has been engineered from the ground up. In the Dozer Training Pack, this includes the tracks, the blade, the transmission, the engine, the controls, and more. This means the simulator has the unique ability to engage a simulated transmission and engine the moment the virtual blade touches the virtual soil.

This gives trainees an exceptional opportunity to truly learn by feel. By working "blind," as on the real equipment, trainees learn proper techniques to move materials or finish surfaces, and get a true understanding of the dozer's capabilities.

The exercises that are built into the Dozer Training Pack are designed to address common beginner as well as advanced challenges. After learning the basic controls, trainees will move to more complex techniques, such as excavating a drainage inlet and transversal ditch, and trailer loading/unloading. The Dozer Training Pack is the only solution on the market that provides a complete experience of driving a dozer.

With halogen working lights and the ability to work in both fair and inclement weather, the Dozer Simulator provides training opportunities that can be difficult or hazardous to replicate in real life.



Supported Vortex Hardware Platforms

The Dozer Simulator Training Pack can be installed on any Vortex simulator hardware platform, with different configurations to meet your budget, space, and training requirements. Vortex simulators are built to last, designed for years of 24/7 operator training.

Vortex Edge laptop-based instructional platform

Vortex Edge Plus portable single display trainer

Vortex Advantage with one, three, or five displays

Learning program

The Dozer Training Pack features progressive learning exercises—from beginner to advanced—designed to progressively teach skills and build confidence:

- ✓ Basic controls familiarization
- ✓ Setting correct blade angle
- ✓ Maintaining material in front of the blade
- ✓ Precise Leveling
- ✓ Access Road Creation
- ✓ Material spreading
- ✓ Dump truck positioning
- ✓ Excavating a drainage inlet
- ✓ Excavating a transversal ditch
- ✓ Trailer loading/unloading

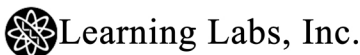
Performance measurement

The Dozer Training Pack gives trainers objective insight into performance and abilities. Trainers can score operators on performance metrics such as:

- ✓ Completion time
- ✓ Idle time and fuel consumption
- ✓ Blade efficiency
- ✓ Track spin
- ✓ Cycle time
- ✓ Amount of material pushed
- ✓ Collisions and other safety violations
- ✓ Contact with power lines, personnel, or vehicles

The optional student management system allows instructors to generate reports from dozer training sessions, and review current and past performance.

Distributed by



1-800-334-4943

www.LLI.com