

QUICK-SET TABLE

Spec Sheet



The Forge Quick-Set Table is designed to save time without sacrificing strength. With its innovative quick-assembly design, setup is fast and hassle-free—just unfold the pre-attached legs, secure them with bolts, and you're ready to go.

1,300 LBS CAPACITY PER CASTER

- Casters: Black All Locking & Leveling Swivel Casters
- Butcher Block: 1.5" UV Coated - Maple
- Shop Top: 1.5" High Density Fiber Board with Plywood Core
- Stainless Steel: 1" Food Grade (304)
- Raw Steel Top - Welding Top
- Black textured powder coated steel hinged legs for easy assembly/installation



STANDARD FEATURES:

- 36" Height
- Black Powder Coated Steel Legs
- 4 All Locking & Leveling Swivel Casters
- Easy Hinged Leg Assembly

OPTIONS/UPGRADES:

- Alternative Top Options See page 2
- Metal Stools
- Standard Vise
- Woodworking Vise

TOP DIMENSIONS:

42"W X 60"L

42"W X 72"L

42"W X 84"L

OVERALL DIMENSIONS:

42"W X 60"L X 36"H

42"W X 72"L X 36"H

42"W X 84"L X 36"H

Scan or click
for additional
products

cef
INNOVATE.CREATE.REPEAT.

Distributed by



Learning Labs, Inc.

1-800-334-4943

www.LLI.com

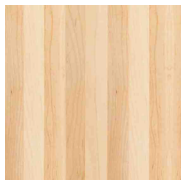
QUICK-SET TABLE

Spec Sheet

FINISH OPTIONS

TOP OPTIONS:

1.5" UV COATED BUTCHER BLOCK:



Maple

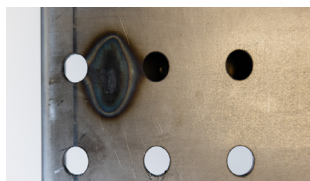
1" FOOD GRADE STAINLESS STEEL:



(304)

NEW!

2" RAW STEEL WITH PIN HOLES



42x60 Only

NEW!

1.5" SHOP TOP:



STOOL OPTIONS

24" BACKLESS METAL STOOL COLORS:



Raw Steel

Purple

Storm Cloud

Black

White

Silver



Teal Blue

Red

Yellow

Royal Blue

Green

Orange

24" & 30" HIGH BACK STOOL OPTIONS:



Purple

Orange

Green

Black

Yellow

Mint Green



White

Copper

Silver

Red

Teal Blue

Royal Blue

Scan or click
for additional
products

cef
INNOVATE.CREATE.REPEAT.



Distributed by

Learning Labs, Inc.

1-800-334-4943

www.LLI.com