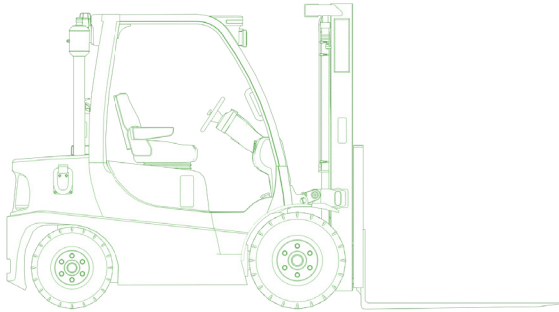


# Forklift Simulator Training Pack



## Simulated equipment specs /

3 ton lifting capacity	2 stage mast
Counterbalance	Rear rocking axel transmission
Adjustable forks	

## Overview /

The Forklift Simulator Training Pack teaches trainees to safely operate a forklift and avoid common hazards such as overturns and collisions. Operators learn the fundamentals such as driving around objects and inclines, aligning the forks with the pallet and handling different loads, while also being exposed to more complex scenarios like working in confined spaces as well as driving with and positioning a ramp.

## Key features & benefits /

The Forklift Simulator Training Pack's goes beyond minimum requirements with certification preparation and advanced exercises. The result is safer and more competent operators.

**Machine behavior** accurately replicates instability when executing maneuvers like tight turns with the load high in the air, driving down a slope with a load and rapid braking with a load.

**Visual aids** like the mini-map, load calculations and the stability triangle, which depicts the machine's center of gravity, provide trainees with tools for success. A rear-view camera and mirrors allow for maximum situational awareness.

**Optimized training experience** including indoor and outdoor environments equipped with a variety of potential hazards such as pedestrians, power lines and racks, ensuring exposure to true-to-life settings.

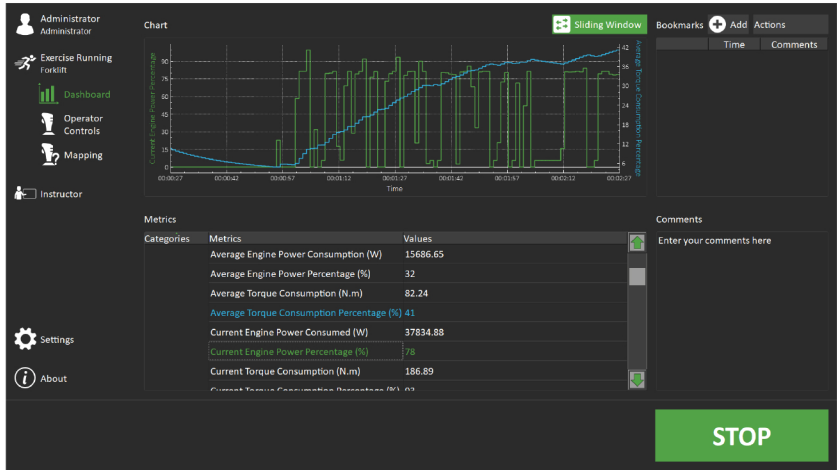


# Best-in-class simulation provides real learning benefits

The Forklift Simulator Training Pack is powered by Smart Training Technology™ which means that all machine components behave as they do on the actual equipment. Smart Training Technology is comprised of CM Labs' proprietary and patented algorithms, and ensures precision engineering of the simulated equipment inside the Forklift Training Pack. This gives trainees an exceptional opportunity to truly learn the consequences of their actions. The detailed simulation includes:

- Weight distribution
- Hydraulics system
- Powertrain
- Mast and forks

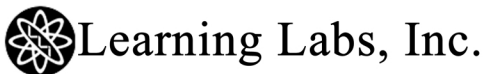
This training pack can also be bundled with CM Labs' full fleet of earthmoving and lifting equipment training packs.



## Supported Hardware Platforms

The Forklift Training Pack runs on the desktop Vortex Edge Plus and the motion-enabled Vortex Edge Max. Vortex simulators are built to last, designed for years of 24/7 operator training.

Distributed by



1-800-334-4943  
www.LLI.com

## Learning program

The Forklift Training Pack features progressive learning exercises—from beginner to advanced—designed to teach skills and ensure safe operations:

- ✓ Basic controls
- ✓ Loading dock
- ✓ Loading container
- ✓ Yard ramp
- ✓ Certification
- ✓ Freeform exercises

## Performance measurement

The Forklift Training Pack gives instructors objective insight into performance and abilities. Performance metrics include:

- ✓ Overturns
- ✓ Contacts with objects or people
- ✓ Major collisions
- ✓ Forks over worker
- ✓ Load contact fail
- ✓ Vehicle stability