



## DEFENDER PORTABLE 2x3 DOWNDRAFT TABLE

The **Defender Portable 2x3 Downdraft Table** by Clean Air Industries is the perfect solution if you're looking for quick & effective source capture of weld fume and grinding dusts. With best-in-class airflow, welders & finishers can simply walk up the table and get to work quickly and safely.

This unit offers up to 265 FPM of capture velocity on the table surface. This ensures weld smoke & fumes are captured at source, complying with OSHA workplace guidelines.

With its compact plug-&-play form factor, the Defender 2x3 Downdraft Table is an affordable, off-the-shelf solution to keep workers and students safe from harmful welding smoke & fumes or grinding & finishing dust.



## Product Benefits

- Eliminates dust and fume from your environment
- Removes harmful particles including bacteria
- Main filter life exceeds the industry standard
- Fire Suppression Available

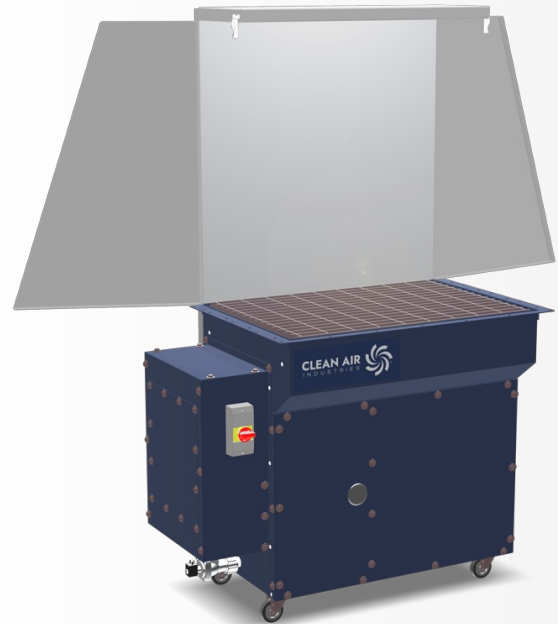
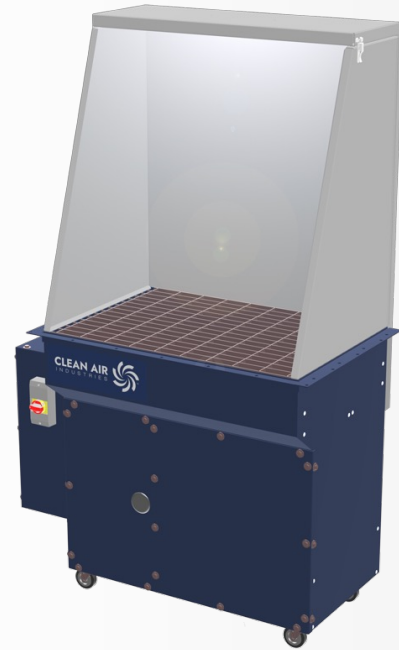
## Key Product Features

- 1200 CFM / 265 FPM of airflow
- Solid 12-gauge powder coated steel construction.
- Automatic Timed Pulse Filter Cleaning system: The filter cleaner engages automatically based on usage, so you don't need to worry about keeping your filters clean.
- Plasma Kit Available: If you're doing manual plasma cutting, we have a kit that lets you take care of the heavy fume with a strong fire suppression and mitigation kit.
- Side & Back Walls: Hinged side and back walls come included with the unit. If you are working on a slightly larger piece, open the side and back walls to make more room.
- Custom Designs & Modular Configurations: Clean Air Industries can modify units to fit your specific Application
- By using a Downdraft Table, you capture the fumes before they can reach your breathing zone. you can keep your welding hood lenses clean so you're not having to constantly replace them.
- Light kit is included

## Filter Information

The Defender Portable 2x3 Downdraft Table has a steel anti-spark baffle to help arrest heavy sparks from welding. The next stage of filtration is a metal mesh prefilter followed by a high quality 80/20 blend Cellulose/Polyester Cartridge Filter to capture welding smoke and fumes.

*For filter technical specifications, see page 4*



**DURABLE  
CELLULOSE  
POLYESTER  
CARTRIDGE  
FILTER**



## Key Applications

- Manual Welding
- Hand Plasma Cutting
- Grinding, Polishing and Finishing
- Educational Welding Labs
- Heavy Soldering

## Health & Safety

Exposure to weld smoke & fumes and grinding dust can pose several serious health hazards. Here are just a few of the potential health risks associated with exposure to these pollutants:

- Respiratory Issues
- Lung Damage
- Metal Fume Fever
- Neurological Effects

## Regulatory Compliance

Health and safety issues are being taken very seriously by a growing number of companies as OSHA, International, and industry standards increase. Many large us manufacturers are planning and adopting European exposure limits as a global standard for their entire company and are exceeding OSHA Standards.

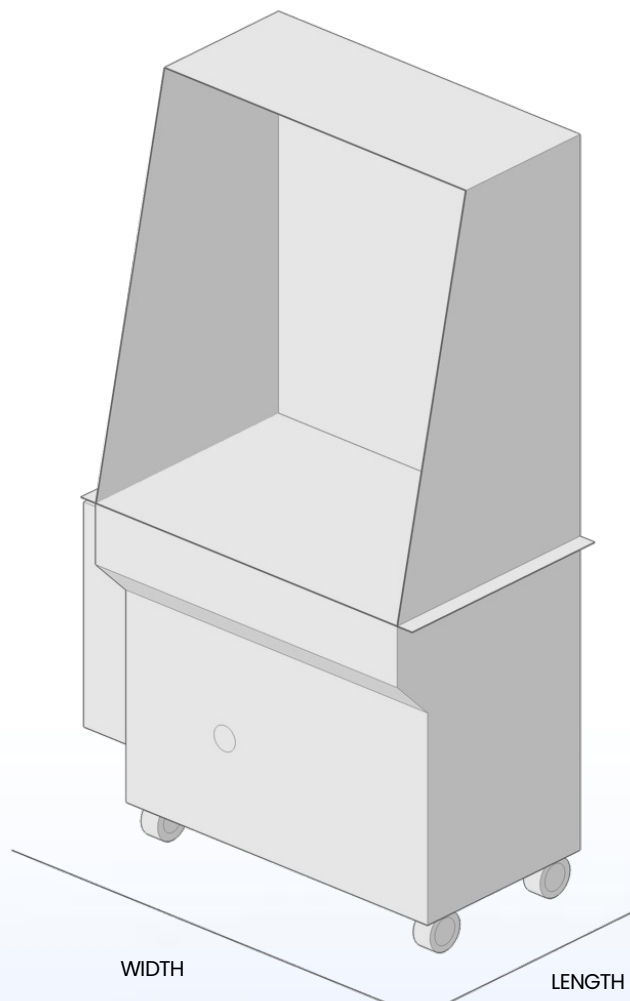
To meet these standards companies must implement a highly efficient dust and fume filtration system to filter out the harmful particulate. The exposure limits these companies are targeting range from .02 - 1 mg/m<sup>3</sup> depending on company policy, well below the 5 mg/m<sup>3</sup> standard set by OSHA.

## Warranty Information

All Clean Air Industries units are backed by a standard 10-year manufacturer's warranty\*. We guarantee that the major structural components of the goods will be free from defects in material and workmanship for ten (10) years from the date of shipment.

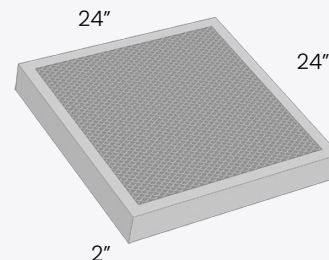
This warranty does not cover consumable parts, fuses, filters, or other non-structural components.

For warranty details, visit our website:  
<https://clean-air.com/warranty>



**PRE FILTER**

- Metal Mesh Spark Arrestor
- Part # F01770-S



**STANDARD CARTRIDGE FILTER**

- 80/20 Media
- 13.84" (OD) x 9.48" (ID) x 18" (L)
- Efficiency: MERV 11
- Part #: FIL-DDT-3x2-8020



**USER & MAINTENANCE  
MANUAL**

To learn how to properly operate and maintain this unit, scan the QR code to instantly access your user and maintenance manual.

Contact us for replacement filters and parts or service



MODEL	CFM	FPM	MOTOR	VOLTAGE	AMPS (FLA)	NOISE	DIMENSIONS	WEIGHT
DDT-3x2	1200	265	1.5 HP @ 3450 RPM	120v/1/ 60Hz	16.7	74 dBA @ 5'	40" W x 76" H x 24" L	400 lbs.

\* Please note that the dimensions provided are based on our base models and may vary depending on selected features. To ensure accurate shipping quotes, kindly contact us for personalized information that considers your chosen product features and customizations. Feel free to reach out with any questions or to request a personalized shipping quote. We are committed to your satisfaction and look forward to helping you!