



ALEX

AXEL

- Speech recognition with artificial intelligence (AI) voice responses
- Scenario-driven, instructor-controlled
- Model-driven physiology with pharmaceutical treatment simulations*
- Virtual AED/Pacing and 12 lead ECG*
- Digital patient and TeamSpace*
- 5-year warranty*

*Based on service level.

- Scenario-driven, instructor-controlled
- Facilitate patient learner communication via internal microphone and speakers in real-time
- Model-driven physiology with pharmaceutical treatment simulations
- Virtual AED/Pacing and 12 lead ECG
- 5-year warranty

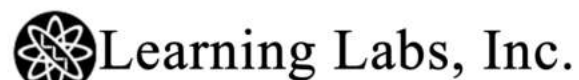
Both ALEX and AXEL are available in light and medium skin tones.



BOTH are ideal untethered/stand-alone simulators to **train nurses, medical students and patient care personnel** anywhere (no control center required) to:

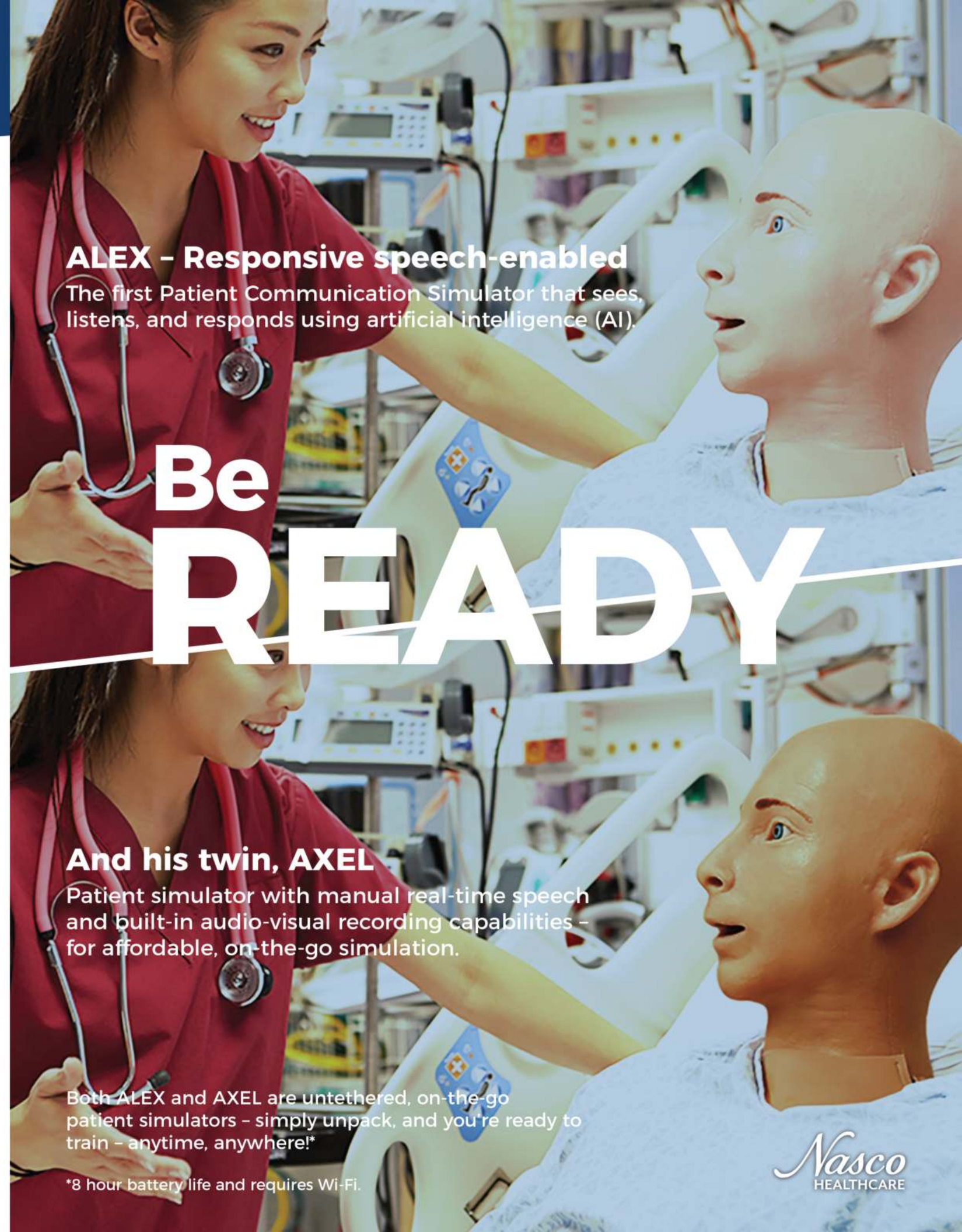
- Build critical thinking, decision-making & priority-setting skills
- Perform patient physical assessment
- Evaluate vitals and waveforms with simulated patient monitor
- Create automated performance assessment of learning objectives
- Maintain treatment plan with customizable labs and medical orders
- Practice procedures such as I.V. administration, catheterization and airway management
- Assess advanced life support performance with CPR Metrics
- Live stream and/or record patient perspective during simulated events

Distributed by



1-800-334-4943

www.LLI.com



ALEX – Responsive speech-enabled

The first Patient Communication Simulator that sees, listens, and responds using artificial intelligence (AI).

Be READY

And his twin, AXEL


Patient simulator with manual real-time speech and built-in audio-visual recording capabilities – for affordable, on-the-go simulation.

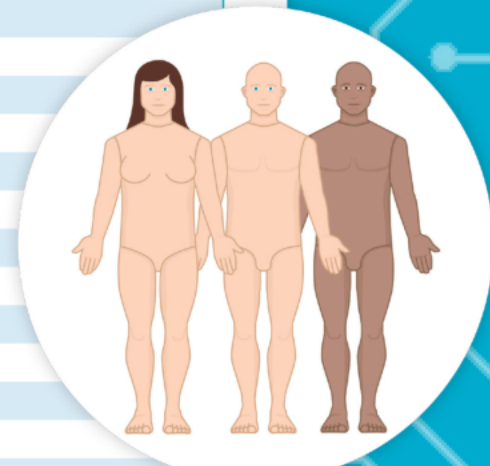
Both ALEX and AXEL are untethered, on-the-go patient simulators – simply unpack, and you're ready to train – anytime, anywhere!*

*8 hour battery life and requires Wi-Fi.



ALEX/AXEL Comparison Guide

	ALEX LITE	ALEX PLUS	ALEX PRO	AXEL
Light Skin Tone	101-7130	101-7140	101-7150	101-7210
Medium Skin Tone	101-7130M	101-7140M	101-7150M	101-7210M
Adult/Adolescent Full Body Patient Simulator	\$	\$\$	\$\$\$	\$\$
Speech Recognition (NLP)	Up to 250 questions per day	Up to 1,000 questions per day	Unlimited	Manual microphone/speaker allows facilitator and student to speak to each other.
Intubation - Oral, Nasal and Digital	Yes	Yes	Yes	Yes
Palpable Pulses - Bilateral	Yes	Yes	Yes	Yes
Carotid	Yes	Yes	Yes	Yes
Brachial	Yes	Yes	Yes	Yes
Radial	Yes	Yes	Yes	Yes
Dorsalis Pedis	Yes	Yes	Yes	Yes
Bilateral Blood Pressure (Manual & 2-step BP) with Smartscope & Smartcuff	Yes	Yes	Yes	Yes
Anterior Heart and Bowel Sounds with Smartscope	Yes	Yes	Yes	Yes
Anterior/Posterior Lung Sounds with Smartscope	Yes	Yes	Yes	Yes
Spontaneous Breathing - Synchronized with Respiratory Rate	Yes	Yes	Yes	Yes
BVM Ventilation	Yes	Yes	Yes	Yes
Patient Monitor with Vitals And Waveforms	Yes	Yes	Yes	Yes
HR, RR, ETCO2, SPO2, TEMP, BP, ECG & MAP	Yes	Yes	Yes	Yes
Virtual AED/Pacing & 12 Lead ECG	Not Available	Yes	Yes	Yes
CPR with Metrics Charting Depth, Rate & Ventilations	LOG	LIVE	LIVE	LIVE
Real-Time Remote Simulation Control	Yes	Yes	Yes	Yes
Scenarios Included with Customizable Patients	Yes	Yes	Yes	Yes
Measurable Objectives with Automated Assessment	Yes	Yes	Yes	Yes
Patient Orders	Yes	Yes	Yes	Yes
Model-Driven Physiology	Not Available	Not Available	Yes	Yes
Drug Treatments	Not Available	Not Available	Yes	Yes
Built-In Microphone and Speakers	Yes	Yes	Yes	Yes
Events, Objectives & Orders Log Entry Record	Yes	Yes	Yes	Yes
Communication Transcription Log Entry Record	Yes	Yes	Yes	Not Available
Iris Cam - Live Stream	Yes	Yes	Yes	Yes
Iris Cam - Recording	Not Available	1,000 hours	Unlimited	1,000 hours
Simulation Log Archive	60 days	1 year	5 years	1 year
Teamspace	Not Available	Not Available	Yes	Not Available
Cloud Connected Control	Yes	Yes	Yes	Yes
Virtual Patient	Not Available	Not Available	Yes	Not Available
Warranty	1 year	5 years	5 years	5 years
IV Arm - Optional	Optional	Optional	Optional	Optional
Female Conversion Kit - Optional	Optional	Optional	Optional	Optional



Weight: 45 lbs. (20 kg)
Height: 5 ft. 1 in. (1.55 m)
Shipping Weight: 67 lbs. (30 kg)
Shipping Dimensions:
 41" H x 19.5" W x 15" D

ACCESSORIES					
101-7160	ALEX/AXEL Female Accessory Kit Light Skin Tone	101-8029M	ALEX/AXEL Optional IV Arm Medium Skin Tone - Right	101-8030UPPLUS	ALEX Service Upgrade Lite to Plus
101-7160M	ALEX/AXEL Female Accessory Kit Medium Skin Tone	101-8899	ALEX Lite to Plus & Plus Service Extension (1 Year)		Mandatory 1-time upgrade for Software Service
101-8029	ALEX/AXEL Optional IV Arm Light Skin Tone - Right	101-8999	ALEX Plus to Pro Service Extension (1 Year)		Extension for Lite customers to upgrade to Plus