

UP300

Versatility with Precision



- ▶ Three Material-Specific Print Heads
- ▶ Double-Sided Interchangeable Build Plates
- ▶ Dual Filtration System
- ▶ Compatibility with Tiertime Print Queue

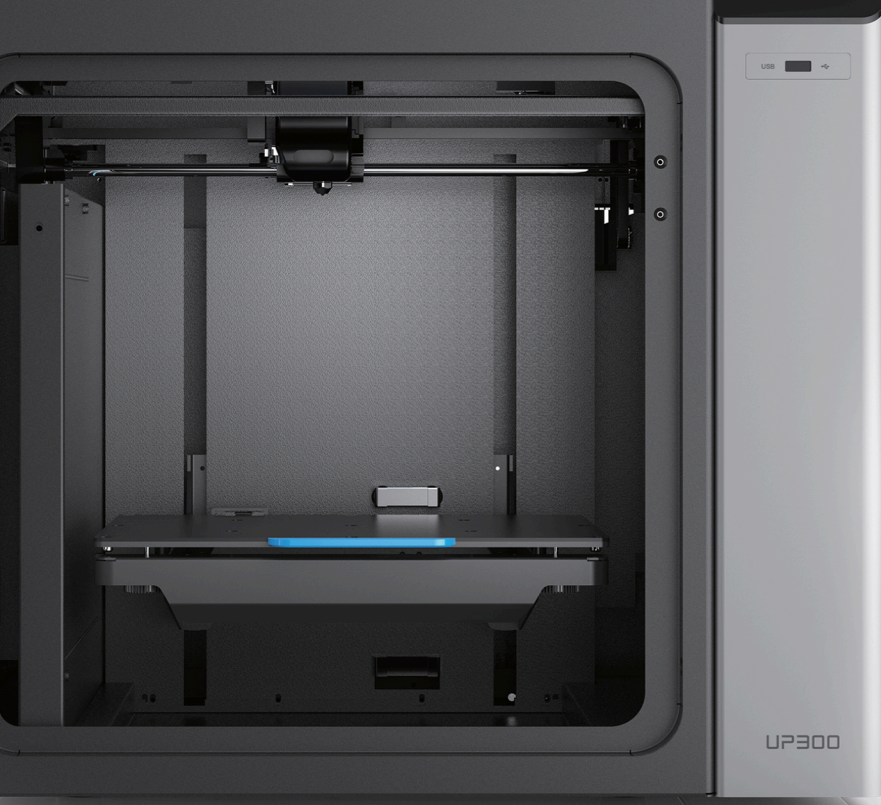


Distributed by

Learning Labs, Inc.

1-800-334-4943

www.LLI.com



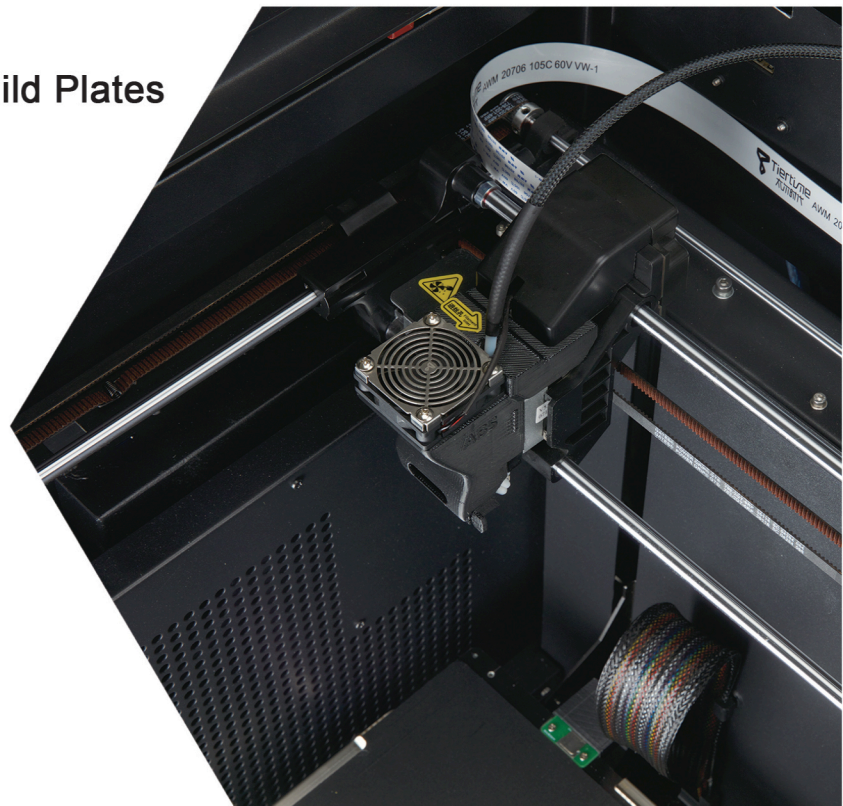
New for 2018, the UP300 is targeted for users demanding a large build volume and consistent performance across different materials. It combines new innovations and improved, popular UP features with Tiertime's renowned reliability.

Three Separate Extruders - Optimized for Different Materials

Each extruder is designed specifically for a matching material type. One is for ABS and other high temperature filaments, one for lower temperature filaments such as PLA, and the other is for TPU, a flexible polyurethane.

Double-Sided Interchangeable Build Plates

A first for Tiertime, the Glass surface provides a consistent, flat base, ensuring a smooth model underside, desirable for printing without a raft. This new print board design allows for easier print job removal due to its rigidity.



Dual Filtration System

Improving upon Tiertime's first-in-class air filtration, the UP300's advanced filtration system has a higher airflow capacity capable of maintaining minimal UFP and VOC density inside the printer's large enclosure.



Specifications

Printing Technology	MEM (Melted Extrusion Modeling)
Extruder	Single
Nozzle Diameter	0.2 mm, 0.4 mm, 0.6 mm
Extruder Maximum Temperature	299°C
Extruder Maximum Travel Speed	200 mm/sec
XYZ Accuracy	2, 2, 0.5 micron
Connectivity	USB cable, Wi-Fi, LAN and USB Stick
Touch Screen	7" Full Colored LCD Screen
Build Volume	205 x 255 x 225 mm (8.7" x 10" x 8.8") (XYZ)
Printed Object Accuracy	±0.1 mm/ 100 mm
Calibration and Leveling	Automatic
Layer Resolution	0.05/0.1/0.15/0.2/0.25 /0.3/0.35/0.4 mm
Print Surface	Perf Glass or Flex Glass, Heated
Dual Filtration System	HEPA and Activated Carbon Filters
Pause to Change Filament Type	Yes
Filament	UP Fila ABS, ABS+, PLA, TPU and more
Filament Diameter	1.75 mm
Tiertime Print Queue	Yes
Filament Spool Compatibility	500 - 1000 g
Extra USB Input for Add-on	5 V, 1 A
Compatible for 3rd Party Materials	Yes

Software

Software	UP Studio
Supported OS	Windows 7 SP1 or later Mac OS X, iOS 8.x/9.x
Importable File Formats	up3, .ups, .stl, .obj, .3mf, .ply, .off, .3ds, .gcode
Preview Support Structures	Yes
Editable Support Structures	Yes
Cloud Based Print Settings	Yes

Dimensions

Machine Dimensions	500 x 523 x 460 mm (19.6" x 20.5" x 18.1")
Net Weight	30 kg

Environment

Operating Ambient Temperatures	15 - 30°C, 20 - 70% RH non
--------------------------------	----------------------------

Requirements

Power Input	110-240 VAC, 50-60 Hz, 220 W
-------------	------------------------------