



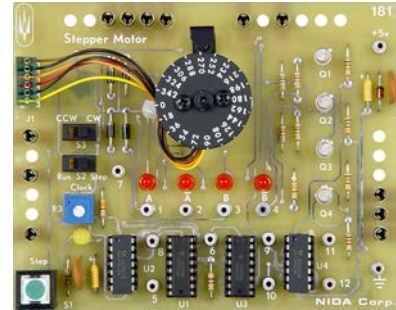
NIDA SPECIFICATIONS



BASIC MOTORS EXPERIMENT CARD SET MODEL 1432

General Description

The Basic Motors experiment card set is designed for use with Nida Model 130 series training consoles. This course introduces the students to Rotating Machinery, DC Motors & Generators, Stepper Motors and AC Motors & Generators. Torque, counter electromotive force, loads, power and efficiency are discussed and reinforced with hands-on experiments measuring signals in the control circuits.



Card Specifications

- Compatible with computer assisted instruction or traditional hard copy text materials.
- Pre-assembled circuits require no assembly, jumper wires, or soldering.
- Exposed components provide maximum technician accessibility.
- Push-on, pull-off connections ensure self-cleaning of contacts.
- Powered automatically by computer instruction or manual push-button action.
- Nondestructive faults activated by computer instruction or manual push-button action.
- Generated signals are measurable with standard test equipment.

Experiment Cards

- DC Motor
PC130-180
- Stepper Motor
PC130-181

Nida Corporation

300 S John Rodes Boulevard Melbourne FL 32904
Phone (321) 727-2265 FAX (321) 727-2655

www.nida.com