

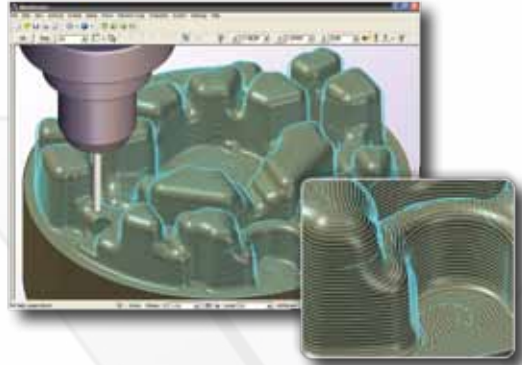


Mastercam X⁵
Enhancements

Here's a preview of a few power

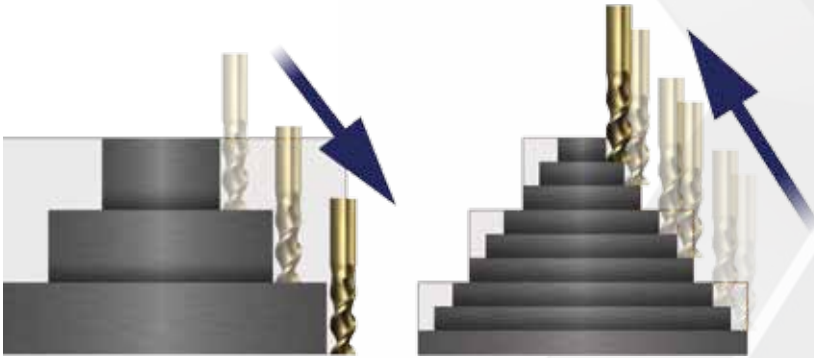
Smart Hybrid Finishing

Hybrid finishing intelligently blends two efficient cutting techniques in a single toolpath. This new toolpath evaluates the model shape and smoothly switches between Constant Z cutting and Constant Scallop machining. The result is a dramatically finer finish with less work.



New OptiRough Toolpath

Mastercam's new 3D surface high speed OptiRough toolpath is a new technique designed to remove large amounts of material quickly using its successful dynamic milling motion. Large, aggressive cuts are followed by fast, smaller up-cuts, safely delivering a fully roughed part faster than ever.



New Dynamic Milling Techniques

Dynamic milling constantly adjusts the toolpath to ensure the most efficient cut possible and allows use of the entire tool flute length, often eliminating the need for multiple depth cuts. New dynamic milling techniques include Dynamic Rest Mill and Dynamic Contour. Dynamic Rest Mill behaves in a manner similar to the current toolpath, only it uses dynamic milling motion instead of core mill or area mill motion for the rest operations. Dynamic Contour uses an intelligent, efficient, high speed contouring strategy to remove material along walls. It respects the user's stepover, taking extra passes where necessary, and can optionally include finishing passes. Dynamic milling includes additional specific support for ISCAR's High Efficiency Machining tools, ensuring that parts are programmed to get the absolute most out of the cutters.

Easier Multiaxis Machining

Mastercam's multiaxis suite has new machining techniques and a new, easy, workflow-oriented interface. Mastercam lets you choose the basic type of work you're doing using realistic illustrations, and then gives you a clear, step-by-step process for defining how you'll cut the part.



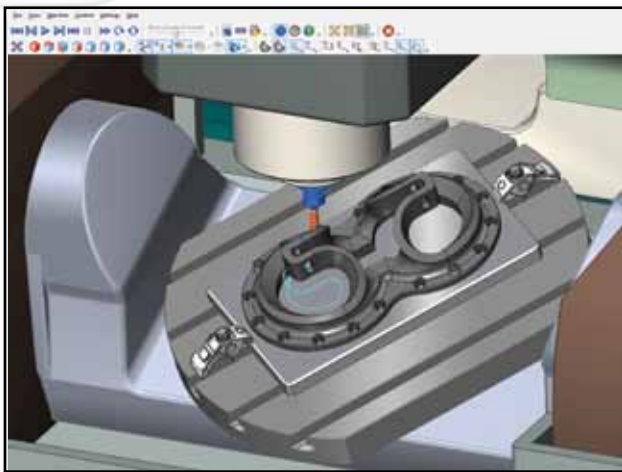
Powerful tools in Mastercam X5 . . .

New Plunge Turn Toolpath

Mastercam's new Plunge Turn toolpath was designed in partnership with ISCAR Metals, Inc. The toolpath consists of custom roughing and finishing strategies designed specifically for ISCAR Cut Grip inserts. This efficient turn/groove toolpath strategy achieves a high degree of accuracy with tight tolerances.

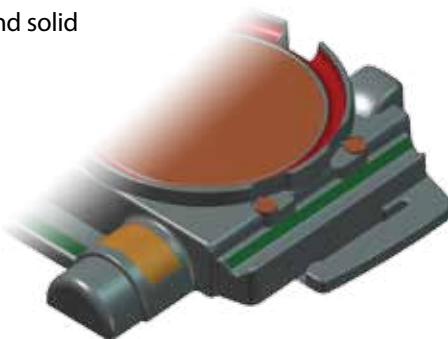
Mastercam Machine Simulation

Machine simulation is a safe and cost-effective way of proving out multiaxis toolpaths. Machine simulation lets you build your machine's virtual replica on your computer screen. You can safely simulate the cutting process to make sure that you created the most effective cut, that the part is located in the machine's 'sweet spot', and that no fixtures, tools, or any machine components are meeting unexpectedly. It is an additional tool to help you make clean, efficient, and accurate programs every time.



Design Enhancements

Mastercam X5 includes a set of powerful new surface and solid analysis tools, giving you precise curvature information to help you in modeling and programming. Also with Mastercam X5, you can assign different colors to individual solid faces and features, and use these colors to more easily select solid areas for toolpathing and other operations. You can also create a pattern of solid features by selecting a source and producing multiple copies of it on a part in a grid, around a center point, or use the AutoCursor to place them manually.



Please see the back panel for even more X5 highlights.



For more information about Mastercam X5, contact your Mastercam reseller or visit www.mastercam.com/enhancements.



A few highlights of what's new in Mastercam X5:

- New OptiRough toolpath
- New Hybrid Finish toolpath
- Improved Multiaxis toolpath interface
- New Multiaxis toolpaths
- Mastercam Machine Simulation
- New Dynamic Rest Mill toolpath
- New Dynamic Contour toolpath
- Island Facing in 2D HST toolpaths
- Circle Mill improvements
- Dynamic Plane improvements
- ISCAR HEM (High Efficiency Machining) support
- Transform toolpath enhancements
- Feature Based Machining (FBM) Mill and Drill enhancements
- New tool library format
- Setup sheet/ActiveReports improvements
- Block Drill support in FBM Drill
- Automatic Toolpathing (ATP) enhancements
- Ability to assign colors to solid faces
- Advanced CAD model curvature analysis
- Improved bolt circle creation
- More powerful post processing customization
- New Plunge Turn toolpath in Lathe
- Roughing and Cutoff toolpath enhancements
- New power library format in Wire
- New Art toolpaths

Visit www.mastercam.com/value for a full list of new features in X5 and www.mastercam.com/enhancements for a video of the latest enhancements.

Mastercam[®]
cnyc software, inc.

671 Old Post Road, Tolland, CT 06084 USA
(800) 228-2877 • (860) 875-5006 • Fax (860) 872-1565
www.mastercam.com • mcinfo@mastercam.com